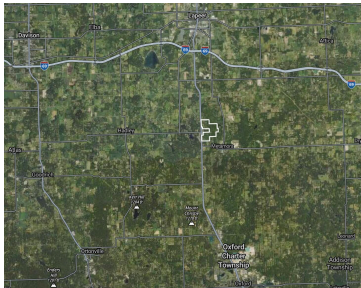


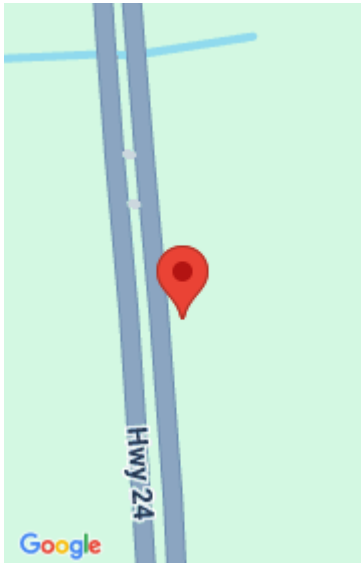
3131, LAPEER, METAMORA, MI, 48455

<https://tuckerbenner.com>



Whether you’re seeking a premier hunting tract, a secluded private estate, or a large-scale development opportunity this property deserves your attention. BATVAI *Maps contained on our sites are there to simply depict the over all layout or shape of a given property and show what it looks like from an aerial view. These maps are [...]

- 0 baths
- Acreage
- Land
- Active



Basics

Category: Land

Status: Active

Lot size: 509 sq ft

County: Lapeer

Type: Acreage

Bathrooms: 0 baths

Lot Size Acres: 509 acres

Building Details

Current Use: Hunting, Farm, Agricultural

Amenities & Features

Utilities: Natural Gas Available, Electricity Available, None

Waterfront Features: Pond, Stream/Creek

Lot Features: Ravine, Rolling Hills, Buildable, Recreational, Tillable, Wetland Area, Wooded

Fees & Taxes

Tax Assessed Value: \$881,244

Tax Year: 2023

Tax Annual Amount: \$20,902

School Information

High School District: Lapeer

Miscellaneous

Call us now

Road Surface Type: Paved

CrossStreet: S Lapeer and W Sutton

Listing Terms: Cash, Conventional

Call us now



Phone: (231)730-8781

Email: tuckerbennerteam@gmail.com

Address: 2747 Lakeshore Drive, Twin Lake, MI 49457

