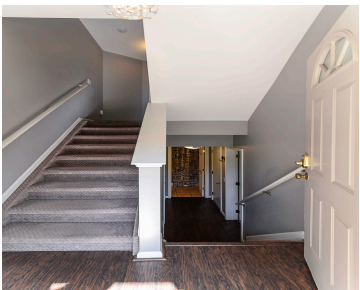


3164, PROMENADE, ANN ARBOR, MI, 48108  
https://tuckerbenner.com

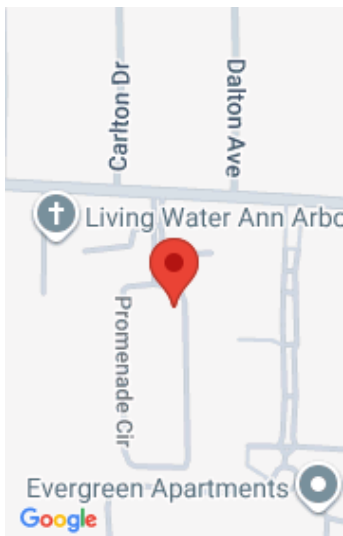


\$319,000

Beautifully upgraded 3-bedroom, 2.5-bath townhouse with an attached 1.5-car garage. The spacious primary suite offers direct access to the main bath, with a second generous bedroom and convenient upper-level laundry. The main floor features an updated kitchen with white cabinetry, stainless steel appliances, and an open living and dining area with a half bath. The [...]



- 3 beds
- 3 baths
- Condominium
- Residential
- Active
- 1242 sq ft



Call us now

Phone: (231)730-8781  
Email: tuckerbennerteam@gmail.com  
Address: 2747 Lakeshore Drive, Twin Lake, MI 49457

# Basics

<b>Category:</b> Residential	<b>Type:</b> Condominium
<b>Status:</b> Active	<b>Bedrooms:</b> 3 beds
<b>Bathrooms:</b> 3 baths	<b>Area:</b> 1242 sq ft
<b>Lot size:</b> 0.01 sq ft	<b>Year built:</b> 2002
<b>Subdivision Name:</b> MADISON PLACE CONDOMINIUM	<b>Bathrooms Full:</b> 2
<b>Lot Size Acres:</b> 0.01 acres	<b>Rooms Total:</b> 6
<b>County:</b> Washtenaw	<b>Bathrooms Half:</b> 1

# Building Details

<b>Building Area Total:</b> 1242 sq ft	<b>Construction Materials:</b> Brick
<b>Sewer:</b> Public	<b>Heating:</b> Forced Air
<b>Stories:</b> 3	<b>Roof:</b> Shingle
<b>Basement:</b> Daylight, Slab	

# Amenities & Features

<b>Laundry Features:</b> In Hall, Laundry Closet, Upper Level, Washer Hookup	<b>Flooring:</b> Carpet, Ceramic Tile, Laminate
<b>Utilities:</b> Natural Gas Connected, Storm Sewer	<b>Parking Features:</b> Garage Faces Rear, Attached
<b>Garage Spaces:</b> 1.5	<b>WaterSource:</b> Public
<b>Appliances:</b> Dishwasher, Disposal, Dryer, Microwave, Oven, Range, Refrigerator, Washer	<b>Interior Features:</b> Ceiling Fan(s), Garage Door Opener
<b>Lot Features:</b> Sidewalk	<b>Window Features:</b> Storms, Screens, Insulated Windows, Window Treatments
<b>Patio And Porch Features:</b> Deck, Porch(es)	<b>Exterior Features:</b> Balcony
<b>Cooling:</b> Central Air	

## Call us now

## Fees & Taxes

**Tax Assessed Value:** \$121,737

**Association Fee Frequency:** Monthly

**Association Fee:** \$250

**Tax Year:** 2025

**Tax Annual Amount:** \$6,693

**Association Fee Includes:** Water, Trash, Snow Removal, Lawn/Yard Care

## School Information

**High School District:** Ann Arbor

**HighSchool:** Huron High School

**Middle Or Junior School:** Scarlett Middle School

**Elementary School:** Carpenter Elementary School

## Miscellaneous

**CrossStreet:** Packard and Carpenter

**Listing Terms:** Cash, FHA, VA Loan, Conventional

Call us now