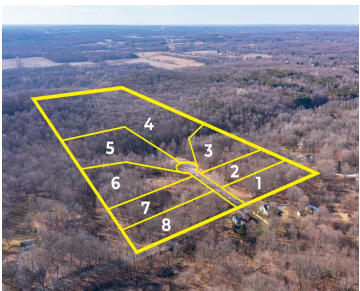


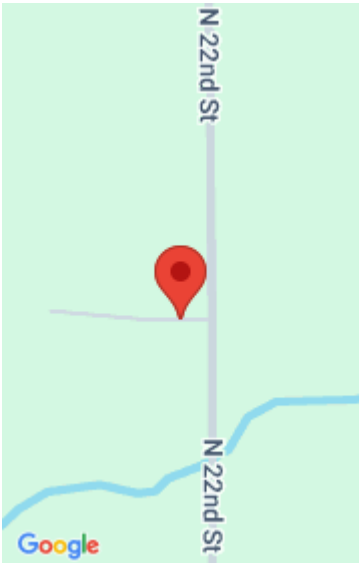
3165, ELK ANTLER, PLAINWELL, MI, 49080

https://tuckerbenner.com



Beautiful Hunter’s Ridge Development with wooded walkout sites available; some sites offer creek frontage. Each unit will need to have its own on-site private well, septic system and drain field. This is a residential site condominium development with minimum square footage requirements. 1,600 sq. ft. one story home and 2,000 sq. ft. for multi-story home. [...]

- 0 baths
- Lot
- Land
- Active



# Basics

**Category:** Land

**Status:** Active

**Lot size:** 1.53 sq ft

**County:** Kalamazoo

**Type:** Lot

**Bathrooms:** 0 baths

**Lot Size Acres:** 1.53 acres

# Amenities & Features

**Utilities:** Electricity Available, Cable Available, Phone Available, None

**Association Amenities:** Pets Allowed

**Lot Features:** Rolling Hills, Site Condo, Buildable, Cul-De-Sac, Wooded

# Fees & Taxes

**Tax Assessed Value:** \$3,668

**Association Fee Frequency:** Annually

**Association Fee:** \$575

**Tax Year:** 2025

**Tax Annual Amount:** \$187

**Association Fee Includes:** Snow Removal

# School Information

**High School District:** Plainwell

# Miscellaneous

**Road Surface Type:** Paved

**CrossStreet:** E B Ave & 22nd Street

**Listing Terms:** Cash, Rural Development, Conventional

Call us now