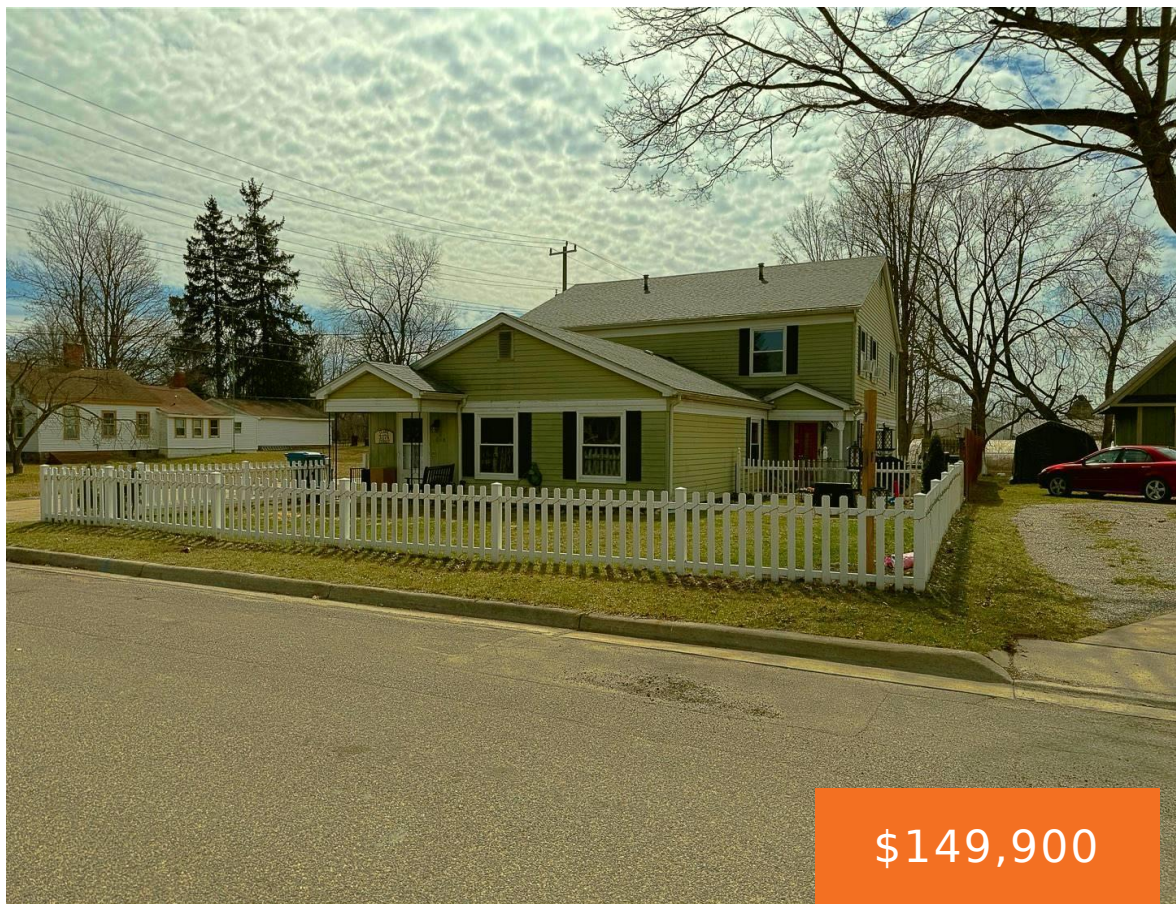


317, CLARK, CLINTON, MI, 49236

https://tuckerbenner.com



\$149,900

Welcome home to this rare townhouse located in the Historic Village of Clinton. This 2 story townhouse comes with a private fenced yard, one car garage, 2 bedrooms and 1 full bathroom. A private entrance leads to an open floor plan., washer/dryer are ready for you! Spacious bedrooms with walk in closets and full bath [...]



- 2 beds
- 1 bath
- Condominium
- Residential
- Active
- 1012 sq ft



Basics

Call us now

Phone: (231)730-8781
Email: tuckerbennerteam@gmail.com
Address: 2747 Lakeshore Drive, Twin Lake, MI 49457



Category: Residential

Status: Active

Bathrooms: 1 bath

Lot size: 392 sq ft

Bathrooms Full: 1

Rooms Total: 1012

Type: Condominium

Bedrooms: 2 beds

Area: 1012 sq ft

Year built: 1970

Lot Size Acres: 0.01 acres

County: Lenawee

Building Details

Building Area Total: 1012 sq ft

Architectural Style: Colonial

Heating: Baseboard, Hot Water

Roof: Asphalt, Composition

Construction Materials: Vinyl Siding

Sewer: Public

Stories: 2

Basement: Slab

Amenities & Features

Laundry Features: In Kitchen, In Unit, Main Level

Utilities: Phone Available, Electricity Available, Cable Available, Cable Connected, Storm Sewer, High-Speed Internet

Parking Features: Garage Faces Rear, Garage Door Opener, Attached

WaterSource: Public

Interior Features: Broadband, Garage Door Opener, Eat-in Kitchen

Window Features: Low-Emissivity Windows, Screens, Insulated Windows

Cooling: Wall Unit(s)

Flooring: Engineered Hardwood

Fencing: Chain Link, Full

Garage Spaces: 1

Appliances: Dishwasher, Disposal, Dryer, Freezer, Range, Refrigerator, Washer

Lot Features: Level, Site Condo

Patio And Porch Features: Patio

Fees & Taxes

Call us now

Tax Assessed Value: \$44,982

Association Fee: \$80

Tax Annual Amount: \$2,284

Association Fee Frequency: Monthly

Tax Year: 2024

Association Fee Includes: Lawn/Yard Care

School Information

High School District: Clinton

Miscellaneous

Road Surface Type: Paved

CrossStreet: Clark and Railroad

Listing Terms: Cash, MSHDA, Conventional

Call us now