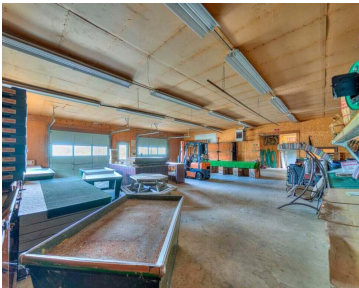


3233, PAGE, JACKSON, MI, 49201

<https://tuckerbenner.com>



Property is available for sale, Lease, Lease purchase option, Land contract terms available. Available immediately

- 1 bath
- Business
- Commercial Sale
- Active



Call us now

Phone: (231)730-8781
Email: tuckerbennerteam@gmail.com
Address: 2747 Lakeshore Drive, Twin Lake, MI 49457

Basics

Category: Commercial Sale

Status: Active

Lot size: 0.26 sq ft

Bathrooms Full: 1

Business Type: Other, Auto Service, Professional/Office, Professional Service, Restaurant, Distribution, Bar/Tavern/Lounge, Storage, Retail, Manufacturing, Institutional

Type: Business

Bathrooms: 1 bath

Year built: 1960

Lot Size Acres: 0.26 acres

County: Jackson

Building Details

Building Area Total: 4000 sq ft

Construction Materials: Wood Siding

StoriesTotal: 4038

Foundation Details: Slab

Number Of Units Total: 1

Heating: Forced Air

Roof: Composition

Number Of Buildings: 1

Amenities & Features

Parking Total: 80

Utilities: Phone Available, Natural Gas Available, Electricity Available, Cable Available, Natural Gas Connected, Electricity Connected, Storm Sewer

Inclusions: Real Estate

WaterSource: Well

Fees & Taxes

Tax Assessed Value: \$6,036

Tax Annual Amount: \$1,345.66

Operating Expense: \$500

Tax Year: 2024

Insurance Expense: \$1,000

Call us now



School Information

High School District: East Jackson

Miscellaneous

CrossStreet: East of US 127 South

Listing Terms: Conventional, Contract, Cash

Call us now