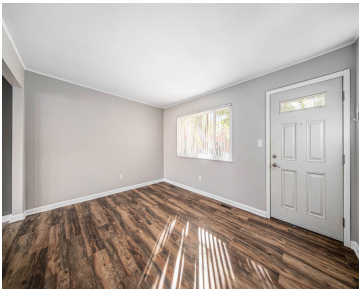


3342, WILLIAMSBURG, ANN ARBOR, MI, 48108

https://tuckerbenner.com



Step into this beautifully updated 2-bedroom, 1-bathroom end-unit that combines modern style with everyday comfort. The home features gleaming wood floors, a fully updated kitchen with stylish finishes, and a refreshed bathroom that feels like new. The partially finished basement adds extra living space—perfect for a home office, gym, or cozy lounge area. Enjoy peace [...]

- 2 beds
- 1 bath
- Condominium
- Residential
- Active
- 841 sq ft



Basics

Category: Residential

Status: Active

Bathrooms: 1 bath

Year built: 1963

Bathrooms Full: 1

County: Washtenaw

Type: Condominium

Bedrooms: 2 beds

Area: 841 sq ft

Subdivision Name: Colonial Square

Rooms Total: 5

Building Details

Building Area Total: 481 sq ft

Sewer: Public

Stories: 2

Basement: Slab

Construction Materials: Brick

Heating: Forced Air

Roof: Shingle

Amenities & Features

Laundry Features: In Basement

Utilities: Natural Gas Connected, Cable Connected

WaterSource: Public

Interior Features: Ceiling Fan(s), Eat-in Kitchen

Window Features: Storms, Screens, Insulated Windows

Cooling: Central Air

Flooring: Carpet, Linoleum, Vinyl, Wood

Association Amenities: End Unit, Pets Allowed, Playground, Trail(s)

Appliances: Dishwasher, Disposal, Dryer, Freezer, Oven, Range, Refrigerator, Washer

Lot Features: Corner Lot, Sidewalk

Exterior Features: Play Equipment

Fees & Taxes

Call us now

Association Fee: \$513 **Association Fee Includes:** Water, Trash, Snow Removal, Sewer, Lawn/Yard Care

School Information

High School District: Ann Arbor **HighSchool:** Huron High School
Middle Or Junior School: Scarlett Middle School **Elementary School:** Mary D. Mitchell Elementary School

Miscellaneous

Road Surface Type: Paved **CrossStreet:** Platt & Williamsburg
Listing Terms: Other, Cash, Conventional

Call us now