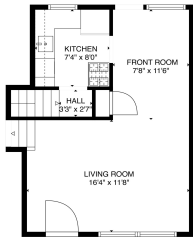


3425, NORWOOD, ANN ARBOR, MI, 48104

https://tuckerbenner.com



Back on the Market with foundation repair completed. Welcome to your serene retreat in the heart of Pittsfield Village—a vibrant community nestled in a lush, park-like setting where the HOA takes care of the heavy lifting. This 2-bed, updated 1-bath condo offers an inviting living space & an unfinished basement ready for your personal touch. [...]

- 2 beds
- 1 bath
- Condominium
- Residential
- Active
- 679 sq ft



Basics

Category: Residential

Status: Active

Bathrooms: 1 bath

Lot size: 0.02 sq ft

Bathrooms Full: 1

Rooms Total: 5

Type: Condominium

Bedrooms: 2 beds

Area: 679 sq ft

Year built: 1945

Lot Size Acres: 0.02 acres

County: Washtenaw

Building Details

Building Area Total: 679 sq ft

Architectural Style: Ranch

Heating: Forced Air

Basement: Full

Construction Materials: Wood Siding

Sewer: Public

Stories: 2

Amenities & Features

Laundry Features: In Basement

Utilities: Phone Available, Natural Gas Available, Electricity Available, Cable Available, Phone Connected, Natural Gas Connected, Cable Connected, Storm Sewer, High-Speed Internet

Appliances: Dishwasher, Oven, Range, Refrigerator, Washer

Lot Features: Recreational, Sidewalk

Flooring: Tile, Wood

WaterSource: Public

Interior Features: Broadband

Cooling: Central Air

Fees & Taxes

Call us now

Tax Assessed Value: \$36,359

Association Fee: \$475

Tax Annual Amount: \$1,889.03

Association Fee Frequency: Monthly

Tax Year: 2025

Association Fee Includes: Water, Trash, Snow Removal,
Sewer, Lawn/Yard Care

School Information

High School District: Ann Arbor

Miscellaneous

Road Surface Type: Paved

Listing Terms: Cash, FHA, VA Loan, Rural Development,
MSHDA, Conventional

CrossStreet: Packard St. and
Whitewood St.

Call us now



Phone: (231)730-8781

Email: tuckerbennerteam@gmail.com

Address: 2747 Lakeshore Drive, Twin Lake, MI 49457

