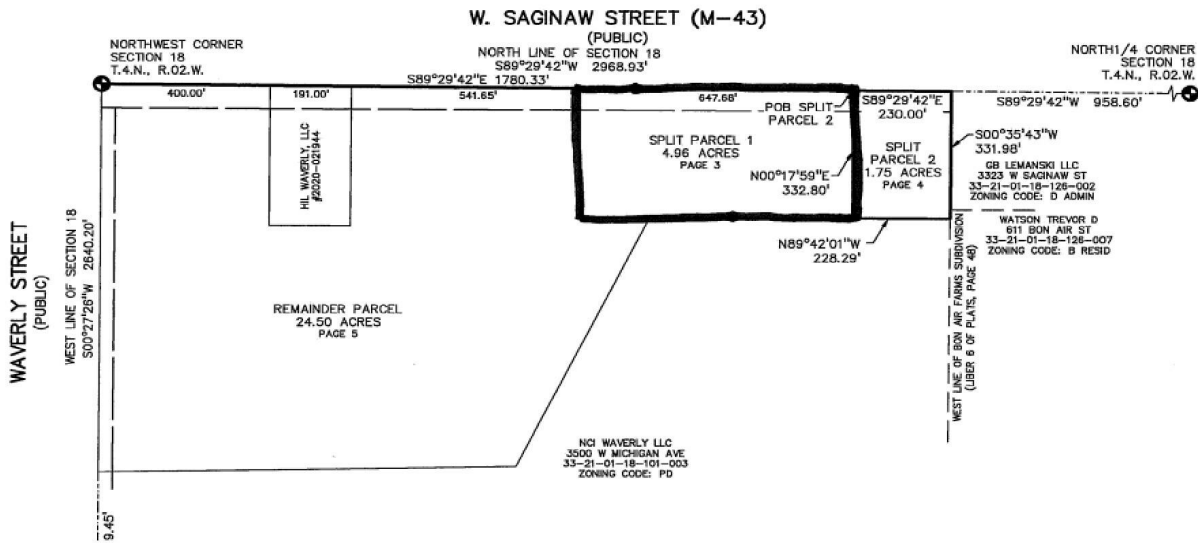


3425, SAGINAW, LANSING, MI, 48917

https://tuckerbenner.com



\$1,500,000

Tremendous opportunity to be part of WestPark, a 120-acre planned development community. This lot is approved for climate controlled storage along with a long list of other approved commercial uses, including drive-thru. WestPark is slated for a mix of up to 600 single and multi-family residences along with eight commercial out lots. All commercial lots [...]

- 0 baths
- Commercial Land
- Land
- Active



Basics

Category: Land	Type: Commercial Land
Status: Active	Bathrooms: 0 baths
Lot size: 4.96 sq ft	Lot Size Acres: 4.96 acres
County: Ingham	

Call us now

Phone: (231)730-8781
Email: tuckerbennerteam@gmail.com
Address: 2747 Lakeshore Drive, Twin Lake, MI 49457



Amenities & Features

Utilities: Water Available, Sewer Available, Natural Gas Available, None

Fees & Taxes

Tax Assessed Value: \$217,600

Tax Year: 2024

Tax Annual Amount: \$15,464

School Information

High School District: Lansing

Miscellaneous

CrossStreet: Waverly Street & Saginaw St

Listing Terms: Cash, Conventional

Call us now