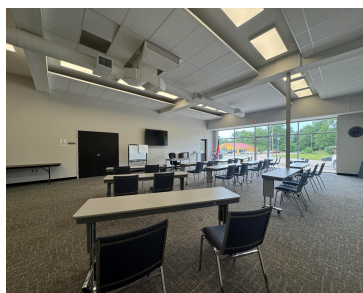


3465, ANN ARBOR, JACKSON, MI, 49202
https://tuckerbenner.com



Excellent opportunity to own a commercial condo unit located in a high traffic area with great visibility, near a major highway on ramp offering convenient access. Fully remodeled in 2019, this unit features a kitchen with stove, microwave, dishwasher, two bathrooms, and both front and back entrances for added convenience. Recent updates include, new roof [...]

- 2 baths
- Office
- Commercial Sale
- Active



Call us now

Basics

Category: Commercial Sale

Status: Active

Lot size: 0.12 sq ft

Bathrooms Full: 2

Business Type: Professional/Office, Retail

Type: Office

Bathrooms: 2 baths

Year built: 1955

Lot Size Acres: 0.12 acres

County: Jackson

Building Details

Building Area Total: 2237 sq ft

Construction Materials: Concrete

StoriesTotal: 1

Number Of Buildings: 1

Number Of Units Total: 1

Heating: Forced Air

Roof: Rubber

Amenities & Features

Inclusions: Real Estate

Utilities: Electricity Available, Natural Gas Connected

Cooling: Central Air

Fees & Taxes

Tax Assessed Value: \$177,309

Tax Annual Amount: \$3,101

Tax Year: 2024

School Information

High School District: East Jackson

Call us now

Miscellaneous

Road Surface Type: Paved

CrossStreet: Bender St.

Listing Terms: Conventional, Cash

Call us now



Phone: (231)730-8781
Email: tuckerbennerteam@gmail.com
Address: 2747 Lakeshore Drive, Twin Lake, MI 49457

