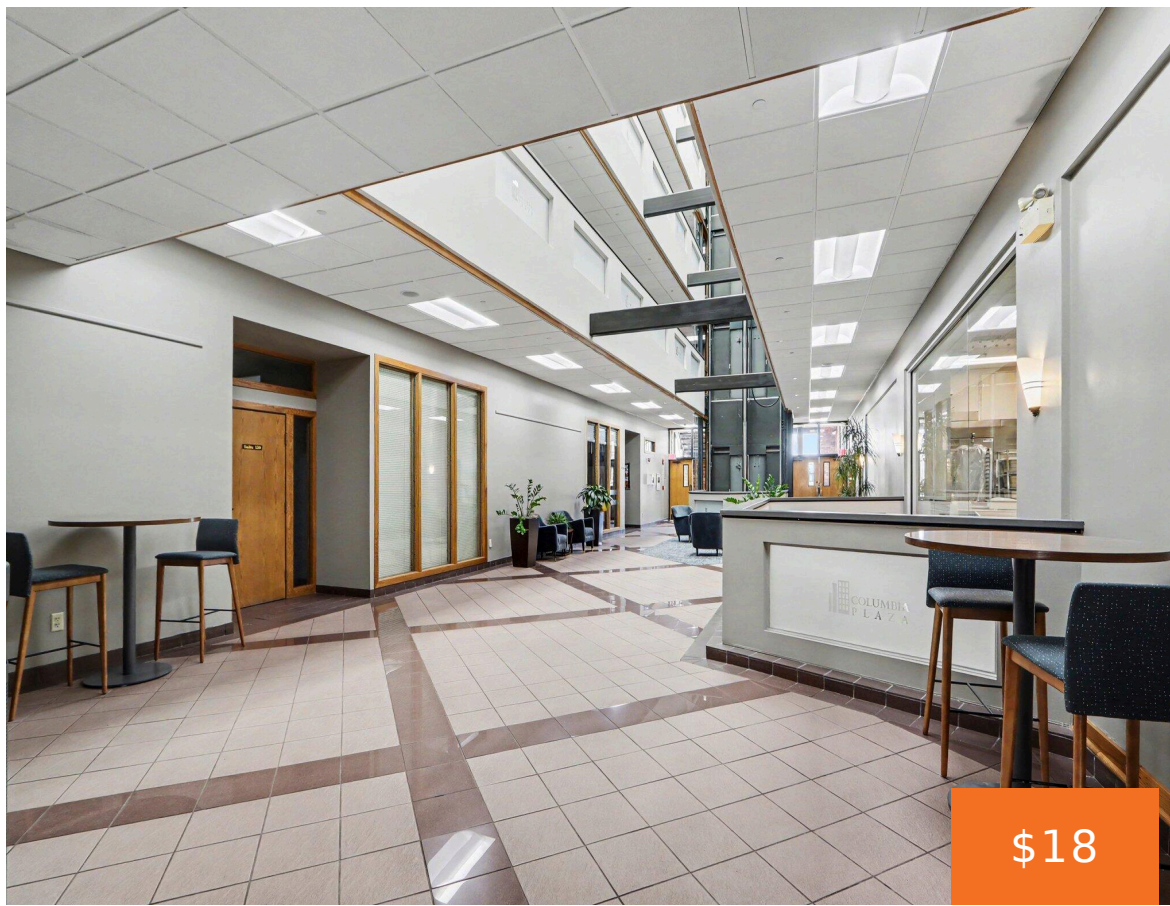
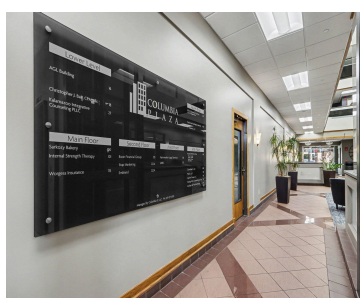
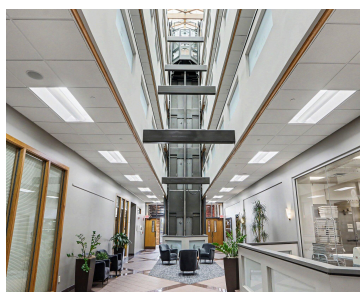


# 350, MICHIGAN, KALAMAZOO, MI, 49007

<https://tuckerbenner.com>



\$18



Suite 405 is ideally located just off the elevator lobby on the 4th floor of the Columbia Plaza building. The suite features a large open bullpen with approximately 20 built-in workstations & a private meeting room, offering an efficient, plug-and-play layout for team-oriented users. Columbia Plaza offers professional office suites in the heart of Downtown [...]

- 0 baths
- Office
- Commercial Lease
- Active



## Basics

**Category:** Commercial Lease  
**Status:** Active  
**Lot size:** 1.09 sq ft  
**Lot Size Acres:** 1.09 acres  
**County:** Kalamazoo

**Type:** Office  
**Bathrooms:** 0 baths  
**Year built:** 1920  
**Business Type:** Professional/Office

## Call us now



Phone: (231)730-8781  
 Email: [tuckerbennerteam@gmail.com](mailto:tuckerbennerteam@gmail.com)  
 Address: 2747 Lakeshore Drive, Twin Lake, MI 49457



---

## Building Details

**Building Area Total:** 6120 sq ft **Construction Materials:** Brick, Stone

**Heating:** Forced Air

**Building Features:** Bath Common Area, Barrier Free, Fire Sprinkler, Multi User Area

**Number Of Buildings:** 1

---

## Amenities & Features

**Utilities:** Phone Available, Natural Gas Available, Electricity Available, Phone Connected, Natural Gas Connected, Electricity Connected, Storm Sewer

**Parking Features:** Paved

**Fireplaces Total:** 1

**Cooling:** Central Air

---

## School Information

**High School District:** Kalamazoo

---

## Miscellaneous

**Road Surface Type:** Paved

**CrossStreet:** E Michigan Avenue & -

**Call us now**



Phone: (231)730-8781

Email: tuckerbennerteam@gmail.com

Address: 2747 Lakeshore Drive, Twin Lake, MI 49457

