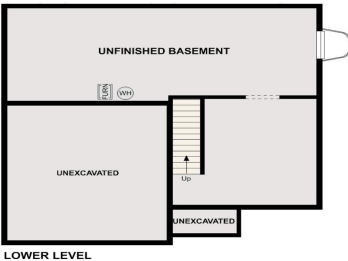
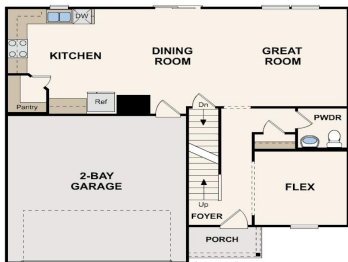


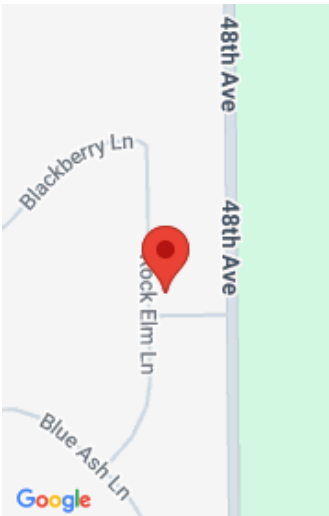
360, ROCK ELM, COOPERSVILLE, MI, 49404

<https://tuckerbenner.com>



Discover Your Dream Home in The Reserve of Coopersville Community! The stylish Essex Plan is a 2-story gem offering a spacious open layout perfect for entertaining and everyday living. The kitchen features elegant cabinetry, quartz countertops and stainless steel appliances, including a range with a microwave hood and a dishwasher. The main floor also includes [...]

- 4 beds
- 3 baths
- Single Family Residence
- Residential
- Active
- 2014 sq ft



Basics

Category: Residential
Status: Active
Bathrooms: 3 baths
Lot size: 0.36 sq ft
Subdivision Name: The Reserve of Coopersville
Lot Size Acres: 0.36 acres
County: Ottawa

Type: Single Family Residence
Bedrooms: 4 beds
Area: 2014 sq ft
Year built: 2026
Bathrooms Full: 2
Rooms Total: 9
Bathrooms Half: 1

Building Details

Building Area Total: 2014 sq ft
Architectural Style: Traditional
Heating: Forced Air
Roof: Shingle

Construction Materials: Vinyl Siding
Sewer: Public
Stories: 2
Basement: Full

Amenities & Features

Laundry Features: Electric Dryer Hookup, Washer Hookup
Parking Features: Garage Door Opener, Attached
WaterSource: Public
Window Features: Low-Emissivity Windows

Flooring: Carpet, Vinyl
Garage Spaces: 2
Appliances: Dishwasher, Microwave, Range
Cooling: Central Air

Fees & Taxes

Tax Assessed Value: \$53,100
Tax Annual Amount: \$300

Tax Year: 2025

Call us now



School Information

High School District: Coopersville

Miscellaneous

CrossStreet: BLUE ASH LANE **Listing Terms:** Other, Cash, FHA, VA Loan, Conventional

Call us now