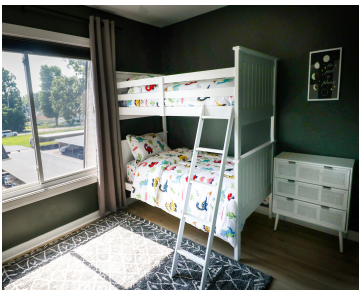


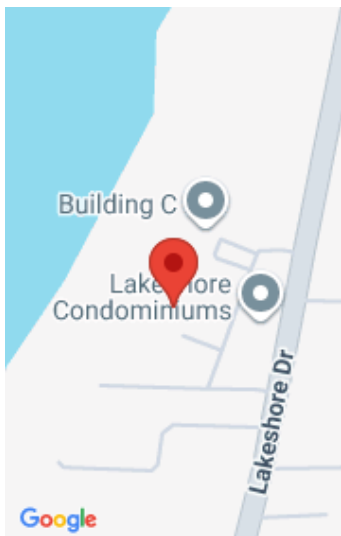
3610, LAKESHORE, ST. JOSEPH, MI, 49085

https://tuckerbenner.com



This updated, furnished 2 bedroom 1 bath condo is available for off season monthly lease. Located in the Lakeshore Condominiums complex on the edge of the city of St. Joseph This unit has direct views of Lake Michigan and 2 pools available (seasonally) . Renters enjoy a gated private complex with gorgeous sweeping views. Just [...]

- 2 beds
- 1 bath
- Condominium
- Residential Lease
- Active
- 950 sq ft



Call us now

Phone: (231)730-8781
Email: tuckerbennerteam@gmail.com
Address: 2747 Lakeshore Drive, Twin Lake, MI 49457

Basics

Category: Residential Lease

Status: Active

Bathrooms: 1 bath

Lot size: 0 sq ft

Bathrooms Full: 1

County: Berrien

Type: Condominium

Bedrooms: 2 beds

Area: 950 sq ft

Subdivision Name: Lake Shore condominiums

Lot Size Acres: 0 acres

Building Details

Architectural Style: Traditional

Stories: 1

Heating: Forced Air

Basement: Full

Amenities & Features

Laundry Features: In Basement

Waterfront Features: Lake

Pool Features: Outdoor/Inground

Appliances: Dishwasher, Refrigerator

School Information

High School District: St. Joseph

Miscellaneous

CrossStreet: Hanley

Call us now