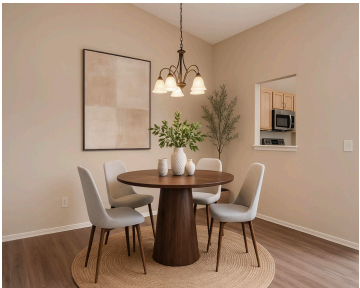
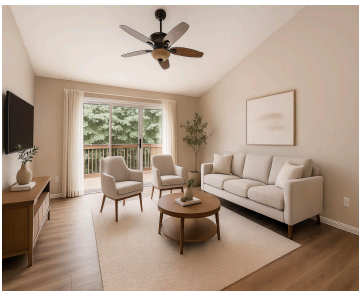


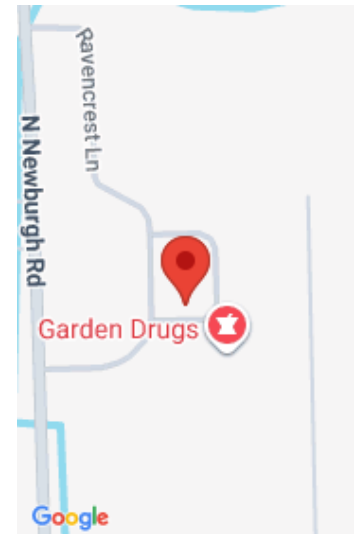
36989, CONDOR, WESTLAND, MI, 48185

https://tuckerbenner.com



Coming Soon! Turn-key ranch condo with a full basement—fresh, stylish, and ready to impress. A light-filled, open-concept great room showcases engineered wood flooring, soaring ceilings, and seamless living/dining space. Extra large windows w glass sliding door opens to a private deck with a lush, tree-filled backdrop. The kitchen shines with newer stainless appliances and a [...]

- 2 beds
- 2 baths
- Condominium
- Residential
- Active
- 1085 sq ft



Call us now

Phone: (231)730-8781  
Email: tuckerbennerteam@gmail.com  
Address: 2747 Lakeshore Drive, Twin Lake, MI 49457

# Basics

**Category:** Residential

**Status:** Active

**Bathrooms:** 2 baths

**Lot size:** 0.14 sq ft

**Subdivision Name:** Ravencrest Condo

**Lot Size Acres:** 0.14 acres

**County:** Wayne

**Type:** Condominium

**Bedrooms:** 2 beds

**Area:** 1085 sq ft

**Year built:** 1996

**Bathrooms Full:** 2

**Rooms Total:** 7

# Building Details

**Building Area Total:** 1085 sq ft

**Architectural Style:** Ranch

**Heating:** Forced Air

**Roof:** Asphalt

**Construction Materials:** Brick, Vinyl Siding

**Sewer:** Public

**Stories:** 1

**Basement:** Daylight, Full

# Amenities & Features

**Laundry Features:** Gas Dryer Hookup, Laundry Room, Main Level

**Utilities:** Phone Connected, Natural Gas Connected, Cable Connected, Storm Sewer

**Garage Spaces:** 2

**Appliances:** Dishwasher, Disposal, Dryer, Microwave, Range, Refrigerator, Washer

**Window Features:** Insulated Windows, Window Treatments

**Cooling:** Central Air

**Flooring:** Carpet, Ceramic Tile, Laminate, Tile, Vinyl

**Parking Features:** Garage Faces Front, Garage Door Opener, Attached

**WaterSource:** Public

**Interior Features:** Ceiling Fan(s), Garage Door Opener, Eat-in Kitchen

**Patio And Porch Features:** Deck, Porch(es)

# Fees & Taxes

Call us now



**Tax Assessed Value:** \$46,903

**Association Fee Frequency:** Monthly

**Association Fee:** \$370

**Tax Year:** 2024

**Tax Annual Amount:** \$2,272

**Association Fee Includes:** Water, Trash, Snow Removal,  
Sewer, Lawn/Yard Care

## School Information

**High School District:** Wayne-Westland

**HighSchool:** John Glenn High School

**Middle Or Junior School:** Stevenson Middle School

**Elementary School:** Wildwood Elementary School

## Miscellaneous

**CrossStreet:** Newburgh & Cherry Hill

**Listing Terms:** Cash, Conventional

Call us now