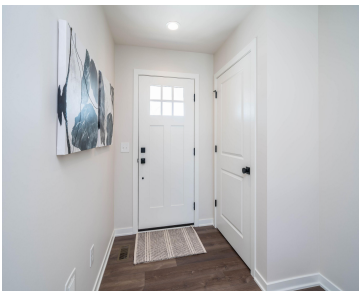


3704, MARABELLA, KALAMAZOO, MI, 49006

https://tuckerbenner.com

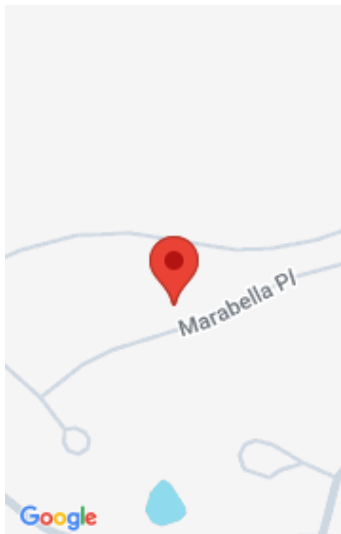


\$478,800



NEW HOME WITH BUILDER WARRANTY! Discover luxury living in Walden Woods, where this beautifully crafted condo offers an inviting open floor plan with high-end finishes throughout. Enjoy a bright sunroom with a sliding door to the deck, perfect for relaxing or entertaining, along with a walkout basement featuring a patio for additional outdoor space. The [...]

- 2 beds
- 2 baths
- Condominium
- Residential
- Active
- 1390 sq ft



Call us now

Phone: (231)730-8781  
Email: tuckerbennerteam@gmail.com  
Address: 2747 Lakeshore Drive, Twin Lake, MI 49457

# Basics

**Category:** Residential

**Status:** Active

**Bathrooms:** 2 baths

**Lot size:** 0.12 sq ft

**Subdivision Name:** Walden Woods

**Lot Size Acres:** 0.12 acres

**County:** Kalamazoo

**Type:** Condominium

**Bedrooms:** 2 beds

**Area:** 1390 sq ft

**Year built:** 2026

**Bathrooms Full:** 2

**Rooms Total:** 8

# Building Details

**Building Area Total:** 1390 sq ft

**Architectural Style:** Ranch

**Heating:** ENERGY STAR Qualified Equipment, Forced Air

**Roof:** Composition

**Construction Materials:** Vinyl Siding

**Sewer:** Public

**Stories:** 1

**Basement:** Full, Walk-Out Access

# Amenities & Features

Call us now

**Laundry Features:** Gas Dryer Hookup, In Unit, Main Level, Washer Hookup

**Utilities:** Phone Available, Cable Available, Natural Gas Connected

**Parking Features:** Garage Faces Front, Garage Door Opener, Attached

**Garage Spaces:** 2

**Appliances:** Humidifier, Dishwasher, Disposal, Microwave, Range, Refrigerator

**Lot Features:** Sidewalk, Rolling Hills

**Patio And Porch Features:** Deck, Patio, Porch(es)

**Cooling:** Central Air, SEER 13 or Greater

**Flooring:** Carpet, Vinyl

**Association Amenities:** Clubhouse, End Unit, Fitness Center, Meeting Room, Pets Allowed, Pool, Other

**Fireplace Features:** Family Room

**WaterSource:** Public

**Interior Features:** Broadband, Garage Door Opener, Center Island, Eat-in Kitchen, Pantry

**Window Features:** Low-Emissivity Windows, Screens, Insulated Windows

**Fireplaces Total:** 1

## Fees & Taxes

**Tax Assessed Value:** \$2,148

**Association Fee:** \$415

**Association Fee Includes:** Other, Trash, Snow Removal, Lawn/Yard Care

**Association Fee Frequency:** Monthly

**Tax Year:** 2025

## School Information

**High School District:** Kalamazoo

**Middle Or Junior School:** Linden Grove Middle School

**HighSchool:** Kalamazoo Central High School

**Elementary School:** Northglade Montessori Magnet School

## Miscellaneous

**CrossStreet:** Wetherington Pt & Alianca Ter

**Listing Terms:** Cash, Conventional

Call us now