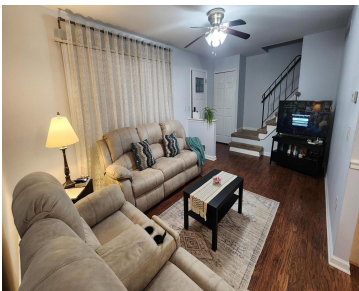


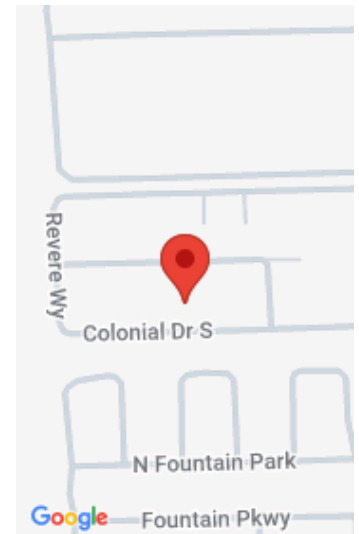
37674, COLONIAL, WESTLAND, MI, 48185

https://tuckerbenner.com



Welcome to this spacious 2 bed 1.5 bathrooms 1,500 sq. ft. condo offering modern updates, smart storage, and a fantastic community setting. With 1,050 sq. ft. above ground and a finished basement, this home combines comfort and function. Step inside to find a freshly painted interior, all-new doors and closet doors, and laminate flooring throughout [...]

- 2 beds
- 2 baths
- Condominium
- Residential
- Active
- 1057 sq ft



# Basics

**Category:** Residential

**Status:** Active

**Bathrooms:** 2 baths

**Lot size:** 0 sq ft

**Bathrooms Full:** 1

**Rooms Total:** 5

**Bathrooms Half:** 1

**Type:** Condominium

**Bedrooms:** 2 beds

**Area:** 1057 sq ft

**Year built:** 1979

**Lot Size Acres:** 0 acres

**County:** Wayne

# Building Details

**Building Area Total:** 1057 sq ft

**Construction Materials:** Brick, Vinyl Siding

**Architectural Style:** Colonial

**Sewer:** Public

**Heating:** Forced Air

**Stories:** 2

**Basement:** Full

# Amenities & Features

**Laundry Features:** In Basement

**Association Amenities:** Clubhouse, Pool

**Garage Spaces:** 1

**Appliances:** Dishwasher, Dryer, Oven, Refrigerator, Washer

**Flooring:** Carpet, Laminate

**Parking Features:** Detached

**WaterSource:** Public

# Fees & Taxes

**Tax Assessed Value:** \$65,635

**Association Fee Frequency:** Monthly

**Association Fee:** \$235

**Tax Year:** 2024

**Tax Annual Amount:** \$3,082

**Association Fee Includes:** Water, Trash, Sewer, Lawn/Yard Care

Call us now



---

# School Information

**High School District:** Livonia

---

# Miscellaneous

**Road Surface Type:** Paved                      **CrossStreet:** W/Newburgh and N/Warren

**Listing Terms:** Cash, Conventional

**Call us now**