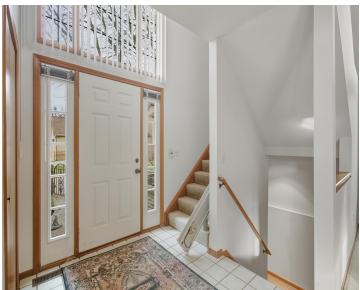


37692, LAUREL PARK, LIVONIA, MI, 48152

https://tuckerbenner.com



\$314,900



Desirable 2 bedroom, 2.1 bath end-unit condominium in the sought-after Greenfield Villas of Livonia. The bright, open great room features a cathedral ceiling and cozy fireplace, offering an inviting space for everyday living or entertaining. The open floorplan flows seamlessly into the dining area, which includes a sliding door for easy access to the backyard. [...]

- 2 beds
- 3 baths
- Condominium
- Residential
- Active
- 1732 sq ft



Call us now



Phone: (231)730-8781

Email: tuckerbennerteam@gmail.com

Address: 2747 Lakeshore Drive, Twin Lake, MI 49457



Basics

Category: Residential	Type: Condominium
Status: Active	Bedrooms: 2 beds
Bathrooms: 3 baths	Area: 1732 sq ft
Lot size: 0 sq ft	Year built: 1986
Bathrooms Full: 2	Lot Size Acres: 0 acres
Rooms Total: 10	County: Wayne
Bathrooms Half: 1	

Building Details

Building Area Total: 1732 sq ft	Construction Materials: Brick
Architectural Style: Colonial	Sewer: Public
Heating: Forced Air	Stories: 2
Basement: Full	

Amenities & Features

Laundry Features: Laundry Room, Main Level	Parking Features: Garage Faces Front, Attached
Fireplace Features: Family Room	Garage Spaces: 2
WaterSource: Public	Appliances: Cooktop, Dishwasher, Dryer, Microwave, Oven, Washer
Patio And Porch Features: Deck	Fireplaces Total: 1
Cooling: Central Air	

Fees & Taxes

Call us now

Tax Assessed Value: \$103,076

Association Fee Frequency: Monthly

Association Fee: \$560

Tax Year: 2025

Tax Annual Amount: \$4,076

Association Fee Includes: Other, Water, Snow Removal

School Information

High School District: Livonia

Miscellaneous

CrossStreet: Six Mile & Newburgh

Listing Terms: Cash, Conventional

Call us now