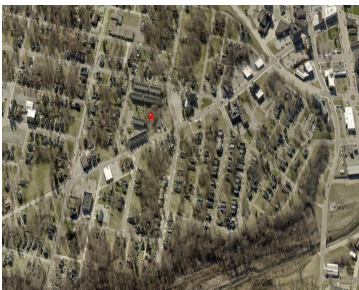
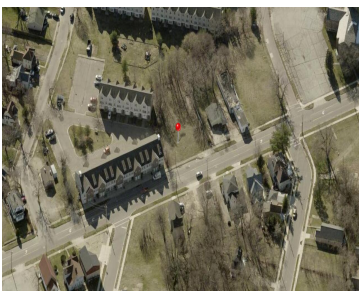


# 378, PIPESTONE, BENTON HARBOR, MI, 49022

<https://tuckerbenner.com>



Prime Commercial Opportunity at 378 Pipestone St., Benton Harbor, MI!  
Unleash your vision on this .367-acre commercial lot located in the heart of Benton Harbor’s bustling commercial district. Whether you’re dreaming of building a retail space, restaurant, office, or an innovative business concept, this property provides a prime canvas to make it happen. What sets [...]

- 0 baths
- Commercial Land
- Land
- Active



# Basics

**Category:** Land

**Status:** Active

**Lot size:** 0.37 sq ft

**County:** Berrien

**Type:** Commercial Land

**Bathrooms:** 0 baths

**Lot Size Acres:** 0.37 acres

# Building Details

**Sewer:** Public Sewer

# Amenities & Features

**Utilities:** Natural Gas Available, Electricity Available, Cable Available, Phone Available, None

**WaterSource:** Public

# Fees & Taxes

**Tax Assessed Value:** \$11,235

**Tax Year:** 2024

**Tax Annual Amount:** \$678

# School Information

**High School District:** Benton Harbor

# Miscellaneous

**CrossStreet:** Maple and Pipestone Street

**Listing Terms:** Cash, Contract

Call us now