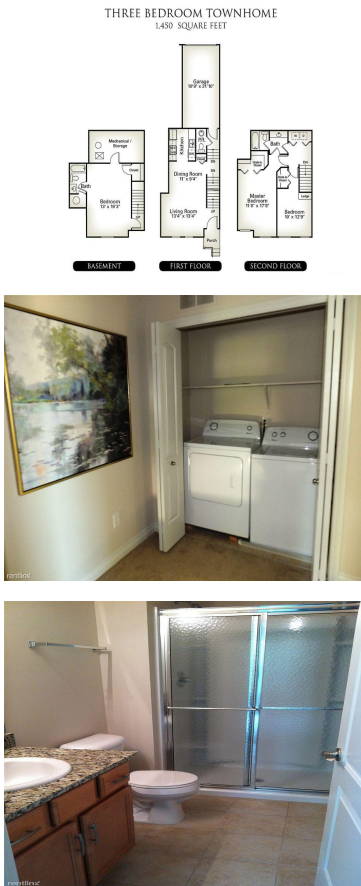
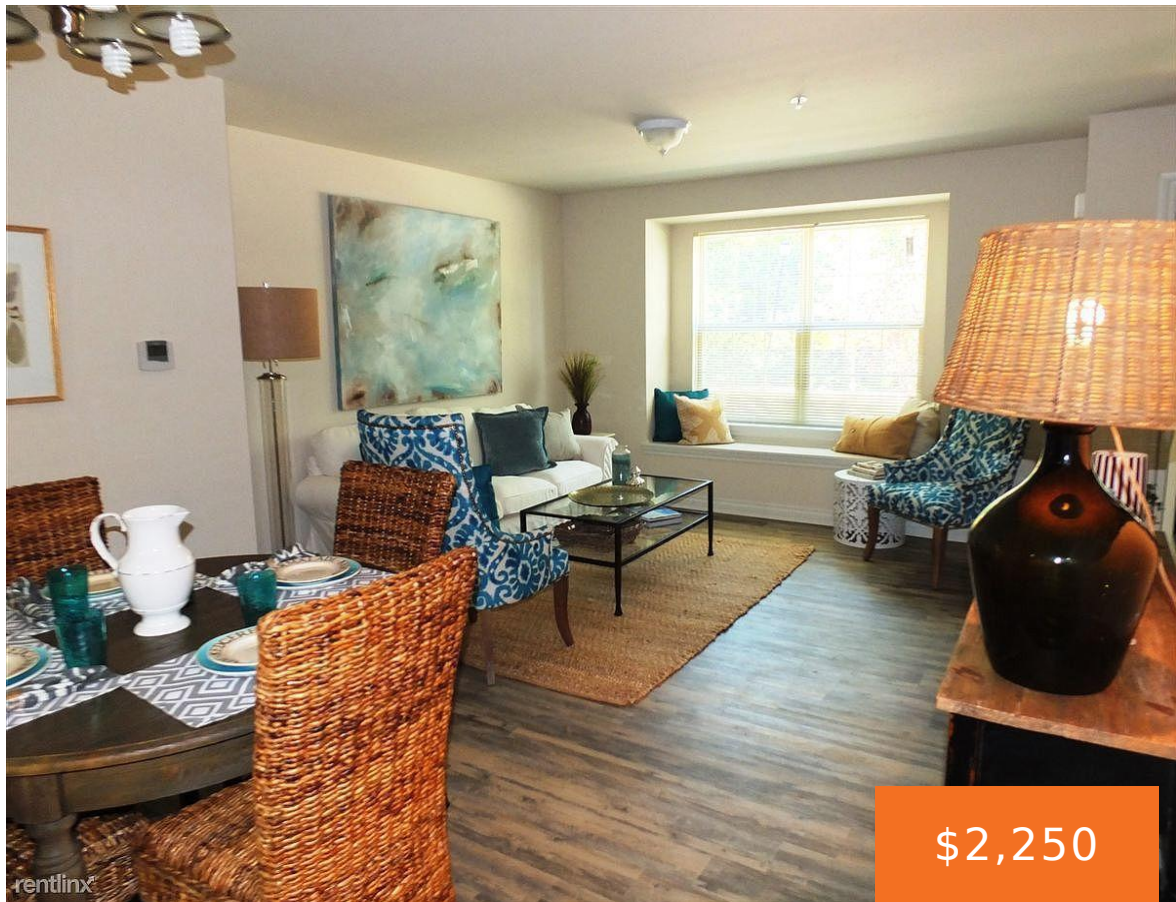


3992, CLOVERLANE, YPSILANTI, MI, 48197

https://tuckerbenner.com



Fresh NEW CARPET AND PAINT! Recently built luxury two and three bedroom town home community has a 2 bedroom townhome available! The Clover Townhomes are located in a wooded setting just minutes from Ann Arbor and Ypsilanti, located within Ann Arbor School District. Features include attached one car garage, private entrances, granite counter-tops and stainless [...]

- 3 beds
- 3 baths
- Condominium
- Residential Lease
- Active
- 1500 sq ft



Basics

Category: Residential Lease
Status: Active
Bathrooms: 3 baths
Lot size: 5 sq ft
Bathrooms Full: 2
County: Washtenaw

Type: Condominium
Bedrooms: 3 beds
Area: 1500 sq ft
Year built: 2016
Lot Size Acres: 5 acres
Bathrooms Half: 1

Building Details

Heating: Forced Air **Stories:** 3

Amenities & Features

Laundry Features: In Unit
Garage Spaces: 1
Cooling: Central Air
Parking Features: Attached
Fireplaces Total: 50

School Information

High School District: Ann Arbor

Miscellaneous

CrossStreet: Carpenter Rd
Owner Pays: Lawn/Yard Care, Trash, Sewer, Snow Removal, Taxes, Water
Tenant Pays: A/C, Electric, Heat, Phone

Call us now