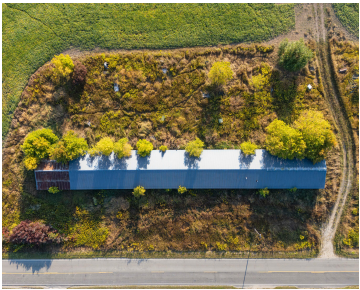


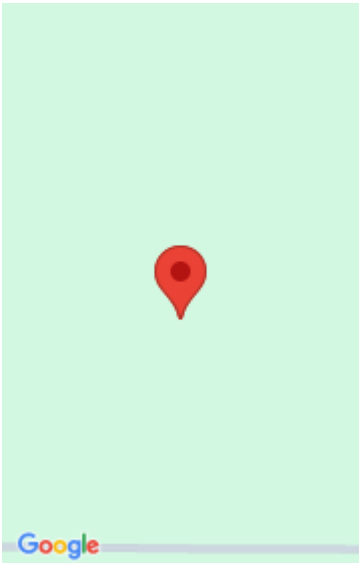
400, 19 MILE, MARION, MI, 49665

<https://tuckerbenner.com>



Discover 40 acres of prime Michigan countryside in Marion, Osceola County, ideally located on the corner of paved 5th Avenue and 19 Mile Road. This versatile acreage features approximately 75% tillable land, making it well-suited for farming, crops, pasture, or a hobby farm. A large existing barn, previously used for hogs and still equipped with [...]

- 0 baths
- Acreage
- Land
- Active



Basics

Category: Land

Status: Active

Lot size: 40 sq ft

County: Osceola

Type: Acreage

Bathrooms: 0 baths

Lot Size Acres: 40 acres

Building Details

Sewer: Septic Tank

Current Use: Farm, Agricultural

Amenities & Features

Utilities: Electricity Available, Electricity Connected

WaterSource: Well

Lot Features: Buildable, Cleared, Tillable, Corner Lot

Fees & Taxes

Tax Assessed Value: \$60,622

Tax Year: 2025

Tax Annual Amount: \$1,716

School Information

High School District: Marion

Miscellaneous

Call us now

Road Surface Type: Paved

CrossStreet: 5th Ave.

Listing Terms: Cash, Conventional

Call us now



Phone: (231)730-8781
Email: tuckerbennerteam@gmail.com
Address: 2747 Lakeshore Drive, Twin Lake, MI 49457

