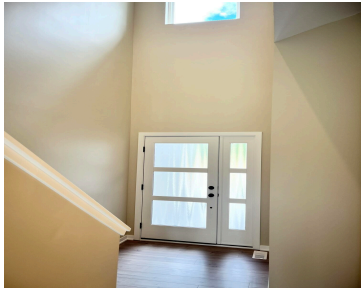


4007, CORVO TRACE, KALAMAZOO, MI, 49006

<https://tuckerbenner.com>



A luxury townhome featuring 3 bedrooms, 2.5 bathrooms and 1829 square feet of living space. The open floor plan features a main level primary suite with a spa like bathroom and large walk-in closet. It also has a 2 story family room and a wall of windows overlooking the private back patio. It has a [...]

- 3 beds
- 3 baths
- Condominium
- Residential
- Active
- 1829 sq ft



Basics



Call us now

Phone: (231)730-8781
Email: tuckerbennerteam@gmail.com
Address: 2747 Lakeshore Drive, Twin Lake, MI 49457



Category: Residential

Status: Active

Bathrooms: 3 baths

Lot size: 0.11 sq ft

Subdivision Name: The Enclave at Walden Woods

Lot Size Acres: 0.11 acres

County: Kalamazoo

Type: Condominium

Bedrooms: 3 beds

Area: 1829 sq ft

Year built: 2023

Bathrooms Full: 2

Rooms Total: 11

Bathrooms Half: 1

Building Details

Building Area Total: 1829 sq ft

Architectural Style: Townhouse

Heating: Forced Air

Basement: Full

Construction Materials: Vinyl Siding

Sewer: Public Sewer

Stories: 2

Amenities & Features

Laundry Features: Gas Dryer Hookup, In Unit, Laundry Room, Main Level, Washer Hookup

Association Amenities: Pool, Trail(s)

Fireplace Features: Family Room, Gas Log

WaterSource: Public

Interior Features: Ceiling Fan(s), Garage Door Opener, Kitchen Island

Window Features: Low-Emissivity Windows, Screens, Insulated Windows

Cooling: Central Air

Utilities: Natural Gas Available, Electricity Available, Natural Gas Connected, Storm Sewer, Public Water, Public Sewer, Broadband

Parking Features: Attached

Garage Spaces: 2

Appliances: Refrigerator, Range, Microwave, Disposal, Dishwasher

Lot Features: Corner Lot, Level, Sidewalk

Exterior Features: Patio

Fees & Taxes



Call us now

Phone: (231)730-8781

Email: tuckerbennerteam@gmail.com

Address: 2747 Lakeshore Drive, Twin Lake, MI 49457



Tax Assessed Value: \$682

Association Fee Frequency:
Monthly

Association Fee: \$260

Tax Year: 2023

Association Fee Includes: Trash, Snow Removal,
Lawn/Yard Care

School Information

High School District: Kalamazoo

HighSchool: Kalamazoo Central

Middle Or Junior School: Linden Grove Middle School

Miscellaneous

Road Surface Type: Paved

CrossStreet: Corvo Trace/Thoreau's

Listing Terms: Cash, Conventional



Call us now

Phone: (231)730-8781

Email: tuckerbennerteam@gmail.com

Address: 2747 Lakeshore Drive, Twin Lake, MI 49457

