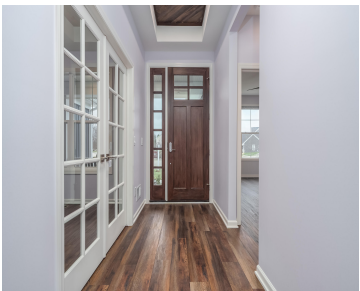


4030, HOLLOW WOOD, PORTAGE, MI, 49024

<https://tuckerbenner.com>



\$750,000



Located at the end of the cul-de-sac in the Portage school district, this beautiful home offers 5 bedrooms 4.5 bath, two of which are main floor primary suites. Private office w/double French drs, Four Season sunroom encased with windows, overlooking private scenic view. Living rm w/so much detail; gas fireplace, built-ins, box beam ceiling. Custom [...]

- 5 beds
- 5 baths
- Single Family Residence
- Residential
- Active
- 3810 sq ft



Call us now

Phone: (231)730-8781
Email: tuckerbennerteam@gmail.com
Address: 2747 Lakeshore Drive, Twin Lake, MI 49457

Basics

Category: Residential

Status: Active

Bathrooms: 5 baths

Lot size: 0.57 sq ft

Subdivision Name: The Homestead

Lot Size Acres: 0.57 acres

County: Kalamazoo

Type: Single Family Residence

Bedrooms: 5 beds

Area: 3810 sq ft

Year built: 2020

Bathrooms Full: 4

Rooms Total: 15

Bathrooms Half: 1

Building Details

Building Area Total: 2844 sq ft

Architectural Style: Traditional

Heating: Forced Air

Roof: Composition

Construction Materials: Stone, Vinyl Siding

Sewer: Public Sewer

Stories: 2

Basement: Daylight, Full

Amenities & Features

Laundry Features: Laundry Room, Main Level, Sink

Parking Features: Garage Door Opener, Attached

Garage Spaces: 3

Appliances: Washer, Refrigerator, Range, Oven, Microwave, Dryer, Disposal, Dishwasher

Lot Features: Sidewalk, Wooded, Cul-De-Sac

Exterior Features: Porch(es), Patio, Deck(s)

Cooling: Central Air

Utilities: Natural Gas Available, Electricity Available, Cable Available, Natural Gas Connected, Storm Sewer, Public Water, Public Sewer, Broadband

Fireplace Features: Gas Log, Living Room

WaterSource: Public

Interior Features: Ceiling Fan(s), Ceramic Floor, Garage Door Opener, Humidifier, Laminate Floor, Water Softener/Owned, Kitchen Island, Eat-in Kitchen, Pantry

Window Features: Low-Emissivity Windows, Screens, Insulated Windows, Window Treatments

Fireplaces Total: 1

Call us now

Fees & Taxes

Tax Assessed Value: \$329,400
Association Fee: \$60
Tax Annual Amount: \$14,757

Association Fee Frequency: Monthly
Tax Year: 2025
Association Fee Includes: Other

School Information

High School District: Portage
Middle Or Junior School: West Middle School

HighSchool: Portage Northern High School
Elementary School: Amberly Elementary School

Miscellaneous

Road Surface Type: Paved
CrossStreet: McGillicuddy & Hollow Wood
Listing Terms: Cash, Conventional

Call us now