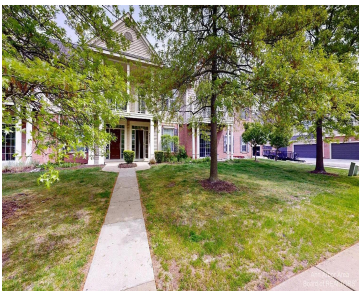
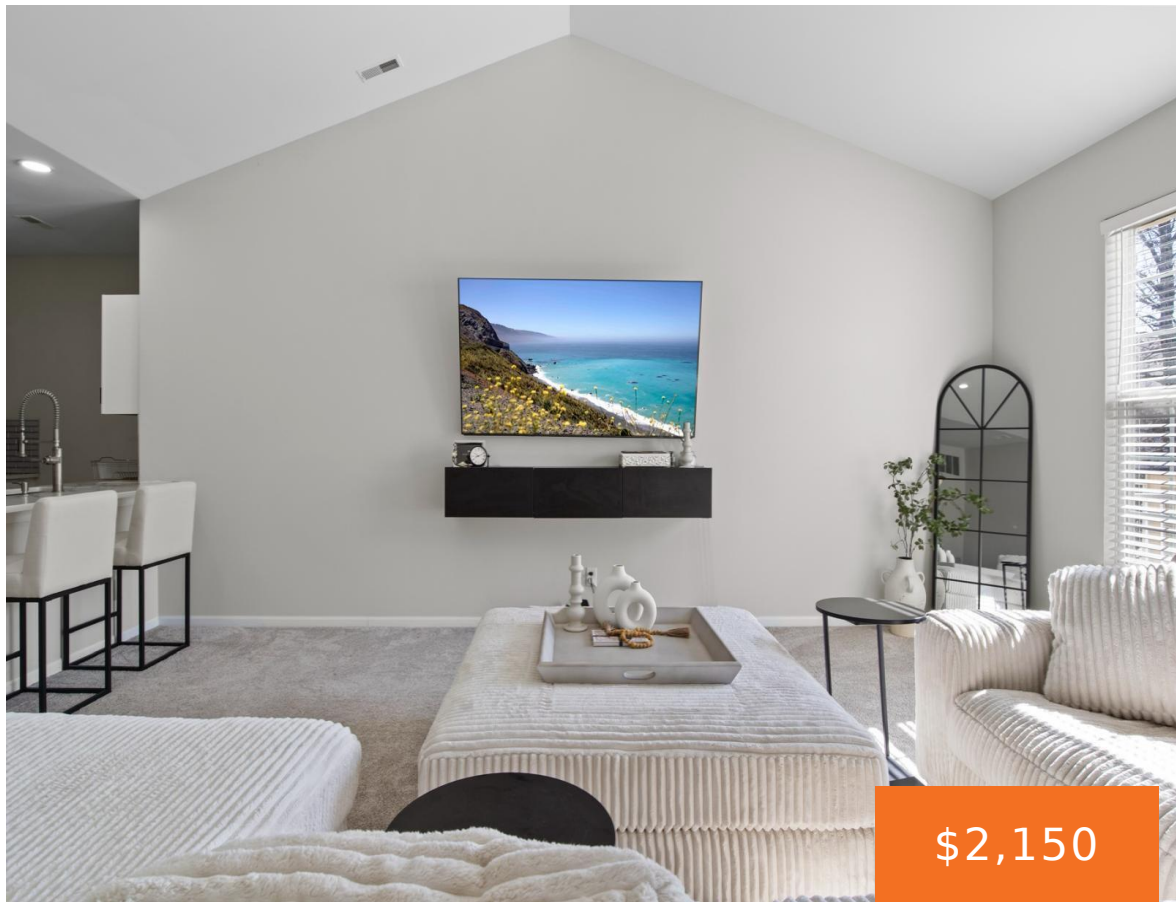


40433, GLENEAGLE, CANTON, MI, 48188

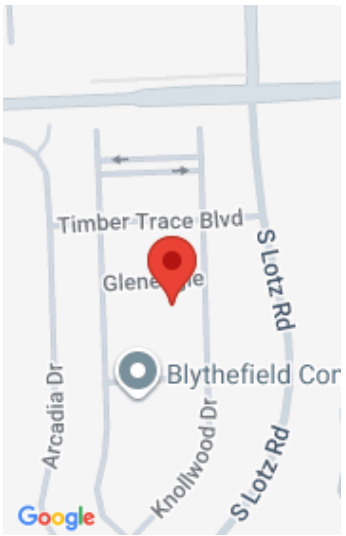
https://tuckerbenner.com



Matterport

Discover your new home at The Links at Fellows Creek! This beautifully maintained upper-level ranch-style condo offers 2 spacious bedrooms, 2 full baths, and an attached 1-car garage. The open-concept layout features granite countertops, subway-tile backsplash, and newer stainless-steel appliances. Fresh carpet, brand-new washer/dryer, and new A/C (July 2025). Enjoy resort-style amenities including a pool, [...]

- 2 beds
- 2 baths
- Condominium
- Residential Lease
- Active
- 1470 sq ft



Call us now

Phone: (231)730-8781
Email: tuckerbennerteam@gmail.com
Address: 2747 Lakeshore Drive, Twin Lake, MI 49457

Basics

Category: Residential Lease

Status: Active

Bathrooms: 2 baths

Lot size: 0 sq ft

Subdivision Name: Links at Fellows Creek

Lot Size Acres: 0 acres

County: Wayne

Type: Condominium

Bedrooms: 2 beds

Area: 1470 sq ft

Year built: 2003

Bathrooms Full: 2

Rooms Total: 8

Building Details

Architectural Style: Colonial

Stories: 1

Heating: Forced Air

Amenities & Features

Laundry Features: In Unit

Parking Features: Garage Faces Rear, Garage Door Opener, Attached

Garage Spaces: 1

Cooling: Central Air

Fees & Taxes

Association Fee Frequency: Monthly

Association Fee Includes: Other, Lawn/Yard Care, Sewer, Snow Removal, Water

School Information

Call us now

High School District: Plymouth-Canton

HighSchool: Canton High School

Middle Or Junior School: Liberty Middle School

Elementary School: Field Elementary School

Miscellaneous

CrossStreet: Corner of S Lotz Rd and Palmer

Owner Pays: Association Fees, Lawn/Yard Care, Trash, Sewer, Snow Removal, Taxes

Tenant Pays: A/C, Cable/Satellite, Electric, Heat, WIFI

Call us now



Phone: (231)730-8781
Email: tuckerbennerteam@gmail.com
Address: 2747 Lakeshore Drive, Twin Lake, MI 49457

