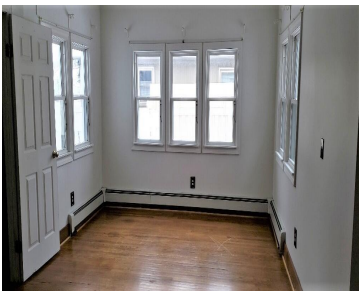


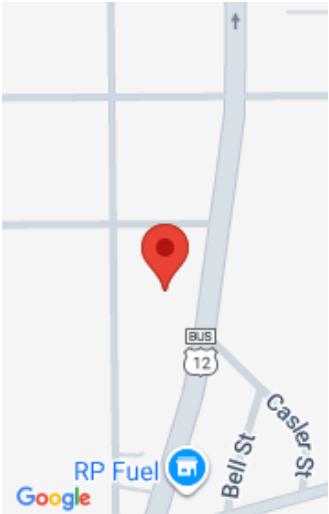
408, HURON, YPSILANTI, MI, 48197

https://tuckerbenner.com



Welcome to 408 S. Huron St., Ypsilanti, MI 48197 – a charming 3-bedroom, 2-bathroom home featuring 1,453 sq. ft. of living space with a spacious layout, a large kitchen, and a full basement for extra storage or potential living space. Enjoy a private backyard, off-street parking, and a prime location just minutes from Downtown Ypsilanti, [...]

- 3 beds
- 2 baths
- Single Family Residence
- Residential Lease
- Active
- 1453 sq ft



Call us now

Phone: (231)730-8781
Email: tuckerbennerteam@gmail.com
Address: 2747 Lakeshore Drive, Twin Lake, MI 49457

Basics

Category: Residential Lease
Status: Active
Bathrooms: 2 baths
Lot size: 0.27 sq ft
Bathrooms Full: 2
County: Washtenaw

Type: Single Family Residence
Bedrooms: 3 beds
Area: 1453 sq ft
Year built: 1860
Lot Size Acres: 0.27 acres

Building Details

Heating: Forced Air **Stories:** 1

Fees & Taxes

Tax Year: 2024

School Information

High School District: Ypsilanti

Miscellaneous

CrossStreet: Michigan Ave.

Call us now