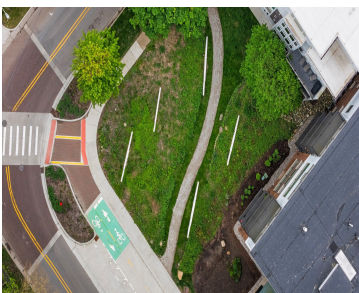
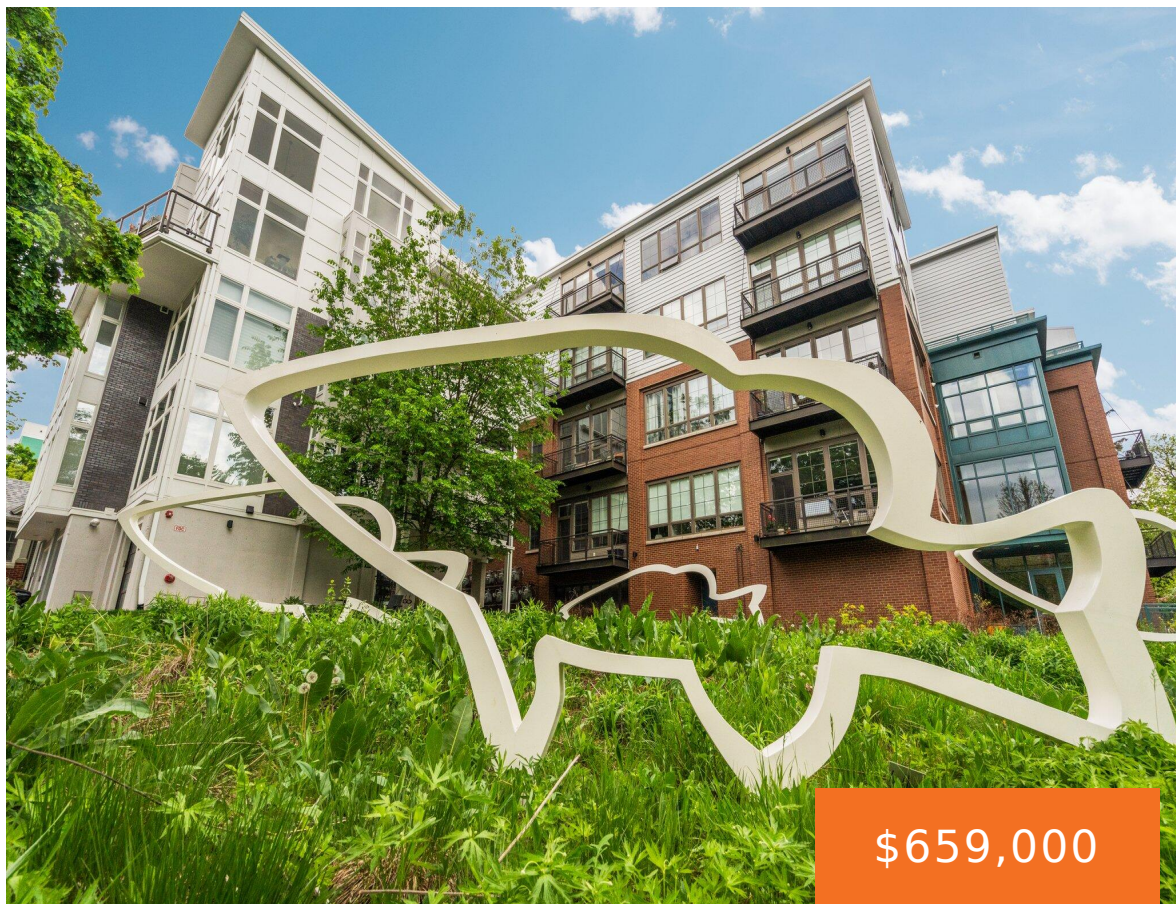


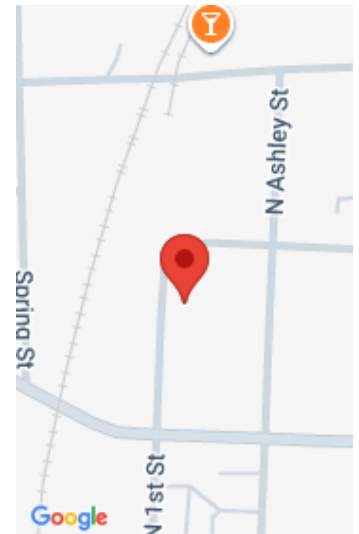
410, FIRST ST, ANN ARBOR, MI, 48103

<https://tuckerbenner.com>



Dreaming of a lifestyle where you can walk or bike just about anywhere? You will love this luxury loft-style condo in the beloved Kerrytown neighborhood at 410 N First. Tucked beside the whimsical Fish Sculpture Park, you’re just a few blocks from local gems like the Kerrytown Shops, Ann Arbor Farmers Market, and Zingerman’s Deli. [...]

- 2 beds
- 2 baths
- Condominium
- Residential
- Active
- 1096 sq ft



Basics

Category: Residential

Status: Active

Bathrooms: 2 baths

Lot size: 0 sq ft

Bathrooms Full: 2

Rooms Total: 6

Type: Condominium

Bedrooms: 2 beds

Area: 1096 sq ft

Year built: 2017

Lot Size Acres: 0 acres

County: Washtenaw

Building Details

Building Area Total: 1096 sq ft

Architectural Style: Other

Heating: Forced Air

Basement: Other

Construction Materials: Brick

Sewer: Public

Stories: 1

Amenities & Features

Laundry Features: In Unit

Flooring: Carpet, Tile, Wood

Parking Features: Attached

Garage Spaces: 1

WaterSource: Public

Appliances: Dishwasher, Disposal, Dryer, Microwave, Oven, Range, Refrigerator, Washer

Exterior Features: Balcony

Cooling: Central Air

Fees & Taxes

Tax Assessed Value: \$339,595

Association Fee: \$451.06

Tax Annual Amount: \$22,884

Association Fee Frequency: Monthly

Tax Year: 2025

Call us now



School Information

High School District: Ann Arbor	HighSchool: Skyline High School
Middle Or Junior School: Forsythe Middle School	Elementary School: Bach Elementary School

Miscellaneous

CrossStreet: W Kingsley & N First	Listing Terms: Cash, Conventional
--	--

Call us now