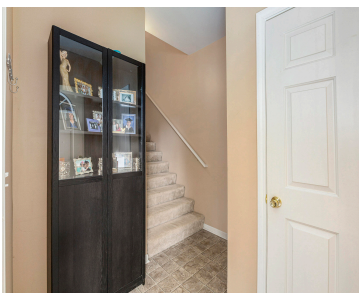


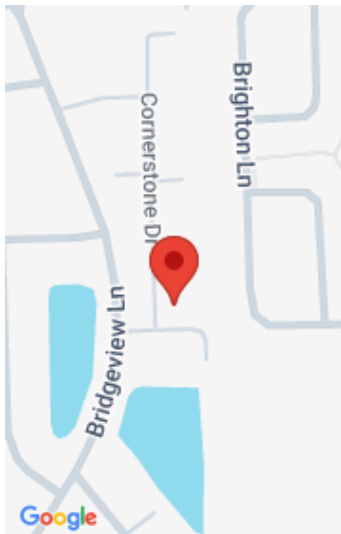
4191, CORNERSTONE, CANTON, MI, 48188

https://tuckerbenner.com



This thoughtfully refreshed 2 bedroom, 2 full bath Woodbridge Estates condo blends comfort and elegance with new carpeting and fresh paint throughout. Step into a bright, open living space where vaulted ceilings and an abundance of natural light create an inviting atmosphere, centered around a cozy fireplace. The spacious primary suite features a cathedral ceiling, [...]

- 2 beds
- 2 baths
- Condominium
- Residential
- Active
- 1585 sq ft



Call us now

Phone: (231)730-8781
Email: tuckerbennerteam@gmail.com
Address: 2747 Lakeshore Drive, Twin Lake, MI 49457

Basics

Category: Residential
Status: Active
Bathrooms: 2 baths
Lot size: 0 sq ft
Subdivision Name: Woodbridge Estates
Lot Size Acres: 0 acres
County: Wayne

Type: Condominium
Bedrooms: 2 beds
Area: 1585 sq ft
Year built: 2004
Bathrooms Full: 2
Rooms Total: 6

Building Details

Building Area Total: 1585 sq ft
Sewer: Public
Stories: 1

Construction Materials: Brick, Vinyl Siding
Heating: Forced Air
Basement: Slab

Amenities & Features

Laundry Features: In Unit, Upper Level
Flooring: Carpet, Vinyl
Association Amenities: Pool
Fireplace Features: Living Room
WaterSource: Public
Interior Features: Garage Door Opener
Exterior Features: Balcony

Pool Features: In Ground
Utilities: Natural Gas Connected, Cable Connected, High-Speed Internet
Parking Features: Garage Door Opener, Attached
Garage Spaces: 1
Appliances: Dishwasher, Dryer, Microwave, Range, Refrigerator, Washer
Patio And Porch Features: Deck
Cooling: Central Air

Fees & Taxes

Call us now

Tax Assessed Value: \$91,968

Tax Year: 2025

Association Fee Includes: Water, Snow Removal, Sewer, Lawn/Yard Care

Association Fee: \$335

Tax Annual Amount: \$5,530

School Information

High School District: Van Buren

Miscellaneous

Road Surface Type: Paved

CrossStreet: Cornerstone Dr/Manor Bridge Dr

Listing Terms: Cash, Conventional

Call us now