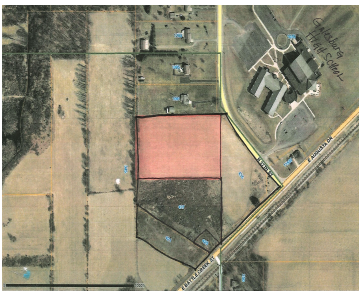


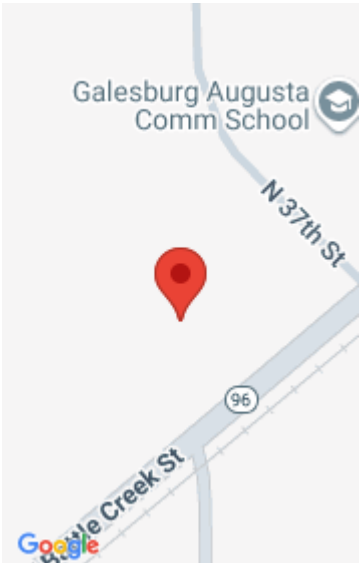
# 421, BATTLE CREEK, GALESBURG, MI, 49053

<https://tuckerbenner.com>



Here is the acreage you have been waiting for! 20 +/- Acres in prime location Galesburg Schools & across from High school. Great location between Battle Creek and Kalamazoo. Currently 1/2 of property is leased to farm for corn every yearn no on going contract.(1,500) Great location between Battle Creek and Kalamazoo. Homes around so [...]

- 0 baths
- Acreage
- Land
- Active



# Basics

**Category:** Land

**Status:** Active

**Lot size:** 20 sq ft

**County:** Kalamazoo

**Type:** Acreage

**Bathrooms:** 0 baths

**Lot Size Acres:** 20 acres

# Building Details

**Current Use:** Residential, Agricultural

# Amenities & Features

**Utilities:** Electricity Available, None

**Lot Features:** Level, Tillable, Corner Lot

# Fees & Taxes

**Tax Assessed Value:** \$44,492

**Tax Year:** 2024

**Tax Annual Amount:** \$5,313

# School Information

**High School District:** Galesburg-Augusta

# Miscellaneous

**Road Surface Type:** Paved

**CrossStreet:** Burgess and 37th

**Listing Terms:** Cash, Rural Development, Conventional

Call us now