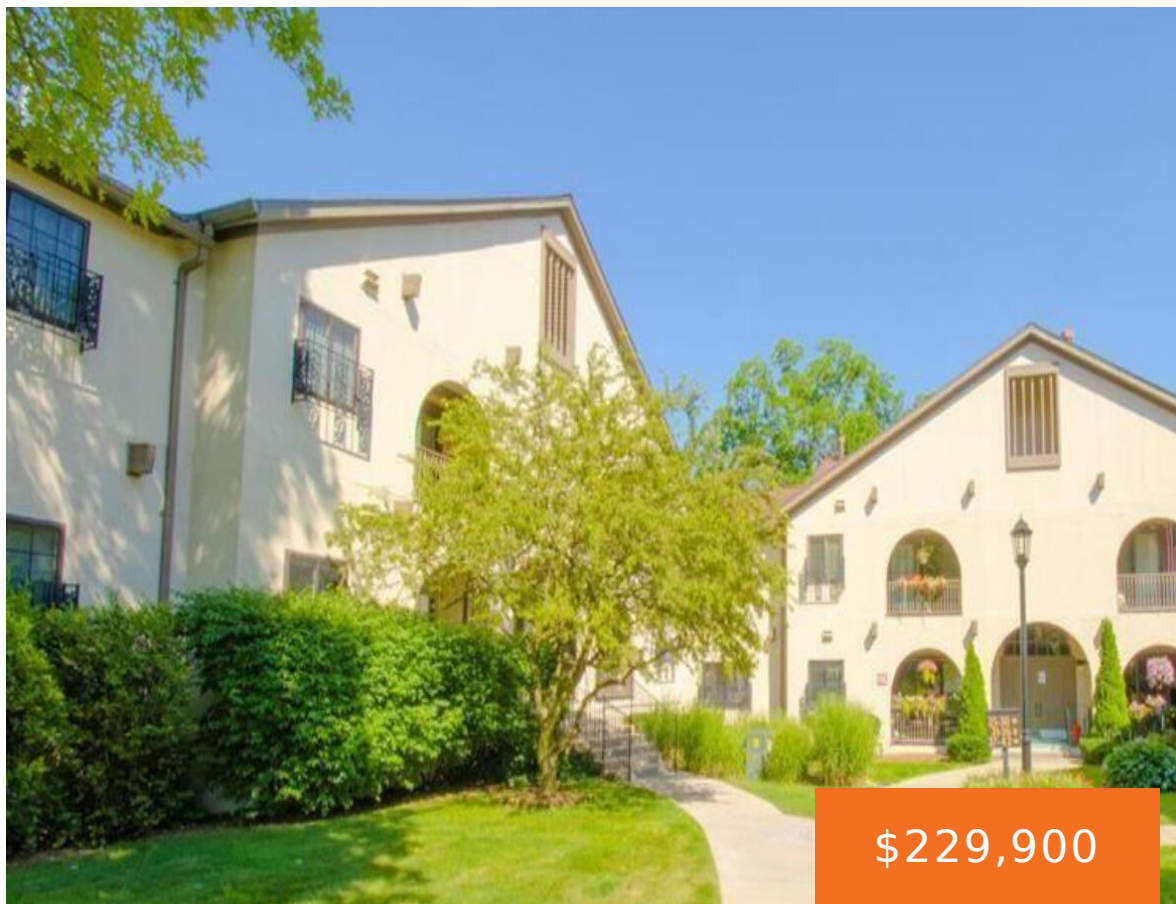
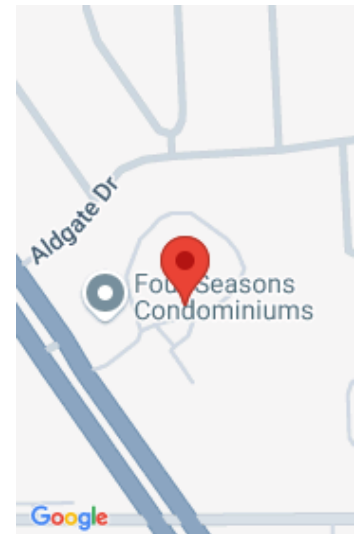


42160, WOODWARD, BLOOMFIELD HILLS, MI, 48304
https://tuckerbenner.com



Beautiful first floor ranch style condo in high desirable Summer Building in Four Seasons complex. Nicely updated; brand new hardwood floors in living room, dining and kitchen. Move-in ready with crown molding & recessed ligg throughout. New Furnace in 2024 and new Central AC in 2023. Gourmet kitchen with wood floors, granite counter tops, stainless [...]

- 1 bed
- 2 baths
- Condominium
- Residential
- Active
- 1040 sq ft



Basics

Category: Residential

Status: Active

Bathrooms: 2 baths

Lot size: 11.42 sq ft

Bathrooms Full: 1

Rooms Total: 4

Bathrooms Half: 1

Type: Condominium

Bedrooms: 1 bed

Area: 1040 sq ft

Year built: 1972

Lot Size Acres: 11.42 acres

County: Oakland

Building Details

Building Area Total: 1040 sq ft

Construction Materials: Brick, Wood Siding

Architectural Style: Townhouse

Sewer: Public Sewer

Heating: Forced Air

Stories: 1

Basement: Full

Amenities & Features

Laundry Features: Laundry Room, Main Level

Parking Features: Garage Door Opener

Garage Spaces: 1

WaterSource: Public

Cooling: Central Air

Fees & Taxes

Tax Assessed Value: \$71,140

Association Fee Frequency: Monthly

Association Fee: \$402.63

Tax Year: 2024

Tax Annual Amount: \$2,979

Association Fee Includes: Other, Water, Trash, Snow Removal, Sewer, Lawn/Yard Care, Heat

Call us now



School Information

High School District: Bloomfield Hills

Miscellaneous

CrossStreet: N of Long Lake, E of Woodward

Listing Terms: Cash, Conventional

Call us now