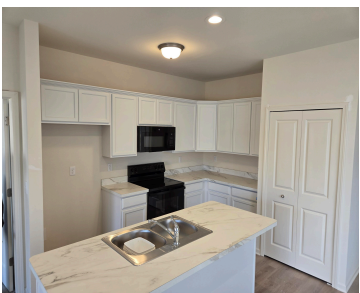


4264, PLUM VILLAGE, MONROE, MI, 48161

<https://tuckerbenner.com>



Welcome to carefree living at Plum Village! This beautiful condo at Plum Village offers modern comfort, stylish finishes, and access to outstanding community amenities. Built with quality in mind, the home features an open layout with abundant natural light, and thoughtfully designed spaces perfect for both everyday living and entertaining. Enjoy relaxing on your private [...]

- 2 beds
- 2 baths
- Condominium
- Residential
- Active
- 1057 sq ft



Call us now

Phone: (231)730-8781
Email: tuckerbennerteam@gmail.com
Address: 2747 Lakeshore Drive, Twin Lake, MI 49457

Basics

Category: Residential

Status: Active

Bathrooms: 2 baths

Lot size: 0 sq ft

Subdivision Name: Plum Grove Village

Lot Size Acres: 0 acres

County: Monroe

Type: Condominium

Bedrooms: 2 beds

Area: 1057 sq ft

Year built: 2025

Bathrooms Full: 2

Rooms Total: 4

Building Details

Building Area Total: 1057 sq ft

Architectural Style: Ranch

Heating: Forced Air

Roof: Asphalt

Construction Materials: Brick

Sewer: Public

Stories: 1

Basement: Full

Amenities & Features

Laundry Features: Electric Dryer Hookup, Main Level, Washer Hookup

Flooring: Carpet, Vinyl

Garage Spaces: 2

Patio And Porch Features: Patio

Pool Features: In Ground

Parking Features: Garage Faces Front, Attached

WaterSource: Public

Cooling: Central Air

Fees & Taxes

Association Fee Frequency: Monthly

Association Fee: \$157

Tax Year: 2025

Association Fee Includes: Water, Trash, Sewer, Lawn/Yard Care

Call us now

School Information

High School District: Ida

Miscellaneous

CrossStreet: M-50

Listing Terms: Cash, Conventional

Call us now