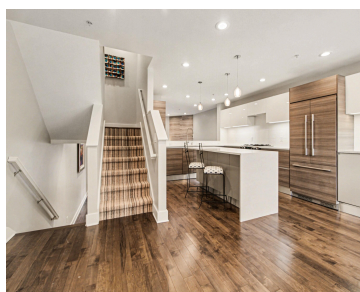
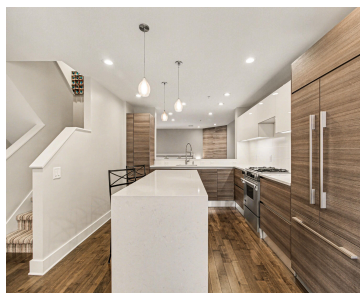
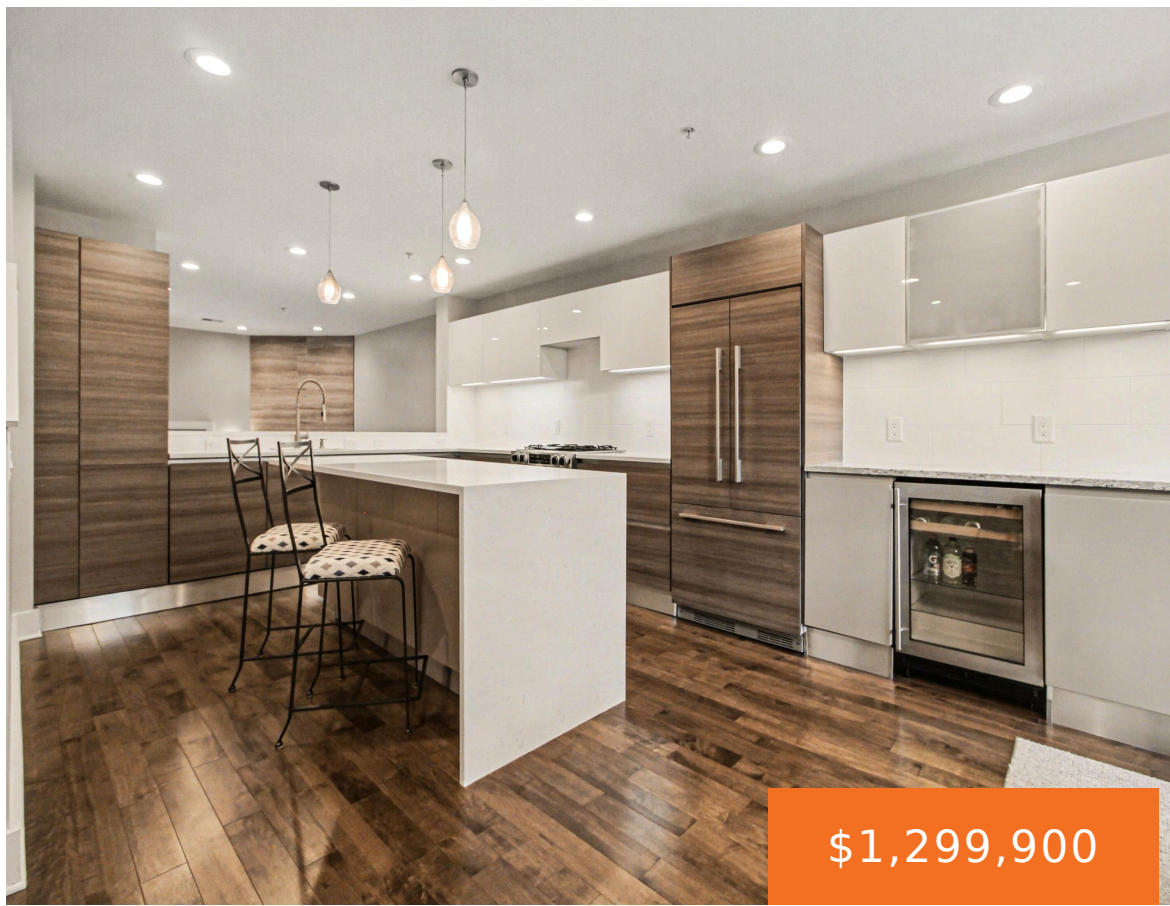


430, MAIN, ANN ARBOR, MI, 48104

<https://tuckerbenner.com>



Tucked into Ann Arbor's premier Ashley Mews community, this elegant brick townhome offers the rare combination of refined finishes, generous square footage, and an unbeatable location. Just steps from Michigan Stadium, downtown Ann Arbor, Kerrytown Market & Shops, and the University of Michigan Central and Hospital campuses, you'll enjoy walkability that truly defines urban living. [...]

- 3 beds
- 4 baths
- Condominium
- Residential
- Active
- 2955 sq ft



Basics

Call us now



Phone: (231)730-8781
Email: tuckerbennerteam@gmail.com
Address: 2747 Lakeshore Drive, Twin Lake, MI 49457



Category: Residential

Status: Active

Bathrooms: 4 baths

Year built: 2002

Bathrooms Full: 3

Rooms Total: 10

Bathrooms Half: 1

Type: Condominium

Bedrooms: 3 beds

Area: 2955 sq ft

Subdivision Name: Ashley Mews Condo

Lot Size Acres: 0 acres

County: Washtenaw

Building Details

Building Area Total: 2504 sq ft

Sewer: Public

Stories: 3

Basement: Daylight, Partial, Slab, Walk-Out Access

Construction Materials: Brick

Heating: Forced Air

Roof: Composition, Shingle

Amenities & Features

Laundry Features: Laundry Closet, Upper Level

Utilities: Natural Gas Connected, Cable Connected, Storm Sewer

Fireplace Features: Gas Log, Living Room

WaterSource: Public

Interior Features: Ceiling Fan(s), Garage Door Opener, Guest Quarters, Wet Bar, Center Island, Eat-in Kitchen

Window Features: Screens, Insulated Windows, Bay/Bow, Window Treatments

Exterior Features: Balcony

Cooling: Central Air

Flooring: Carpet, Ceramic Tile, Tile, Wood

Parking Features: Garage Faces Rear, Garage Door Opener, Attached

Garage Spaces: 2

Appliances: Bar Fridge, Dishwasher, Disposal, Dryer, Oven, Range, Refrigerator, Washer

Lot Features: Sidewalk

Patio And Porch Features: Covered, Porch(es)

Fireplaces Total: 1

Call us now



Phone: (231)730-8781

Email: tuckerbennerteam@gmail.com

Address: 2747 Lakeshore Drive, Twin Lake, MI 49457



Fees & Taxes

Tax Assessed Value: \$556,483 **Association Fee Frequency:** Monthly

Association Fee: \$542 **Tax Year:** 2026

Tax Annual Amount: \$29,076.87 **Association Fee Includes:** Water, Trash, Snow Removal, Sewer, Lawn/Yard Care

School Information

High School District: Ann Arbor

HighSchool: Pioneer High School

Middle Or Junior School: Slauson Middle School

Elementary School: Bach Elementary School

Miscellaneous

Road Surface Type: Paved

CrossStreet: S. Main & Packard

Listing Terms: Cash, Conventional

Call us now



Phone: (231)730-8781

Email: tuckerbennerteam@gmail.com

Address: 2747 Lakeshore Drive, Twin Lake, MI 49457

