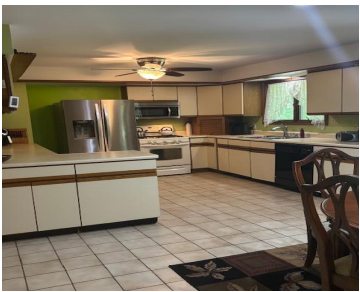


43618, CARLA, PAW PAW, MI, 49079

https://tuckerbenner.com



Tucked away in peaceful Keepsake Shores on Eagle Lake. This charming 2,264 square foot Cape Cod offers a cozy retreat with deeded access, ensuring you can enjoy the water’s edge just steps away. Though the home is solid and well built, it could benefit from some modern updates, presenting a perfect opportunity for buyers to [...]

- 4 beds
- 3 baths
- Single Family Residence
- Residential
- Active
- 2264 sq ft



Basics

Category: Residential

Status: Active

Bathrooms: 3 baths

Lot size: 0.39 sq ft

Subdivision Name: Keepsake Shores

Lot Size Acres: 0.39 acres

County: Van Buren

Type: Single Family Residence

Bedrooms: 4 beds

Area: 2264 sq ft

Year built: 1980

Bathrooms Full: 2

Rooms Total: 8

Bathrooms Half: 1

Building Details

Building Area Total: 2264 sq ft

Architectural Style: Cape Cod

Stories: 2

Basement: Full

Construction Materials: Vinyl Siding

Heating: Forced Air

Roof: Composition

Amenities & Features

Call us now

Laundry Features: Gas Dryer Hookup, Laundry Room, Main Level

Utilities: Phone Available, Natural Gas Available, Electricity Available, Cable Available, Phone Connected, Natural Gas Connected, Cable Connected, High-Speed Internet

Waterfront Features: Lake

Garage Spaces: 2

Appliances: Dishwasher, Dryer, Microwave, Range, Refrigerator, Washer, Water Softener Owned

Lot Features: Level

Patio And Porch Features: Deck

Fireplaces Total: 1

Flooring: Carpet, Tile

Parking Features: Attached

Fireplace Features: Formal Dining, Gas Log

WaterSource: Private Water

Interior Features: Broadband, Garage Door Opener

Window Features: Window Treatments

Exterior Features: Other

Cooling: Central Air

Fees & Taxes

Tax Assessed Value: \$122,800

Association Fee: \$175

Tax Annual Amount: \$4,852.29

Association Fee Frequency: Other

Tax Year: 2024

School Information

High School District: Paw Paw

Miscellaneous

CrossStreet: Hoodridge & M-51

Listing Terms: Cash, Conventional

Call us now