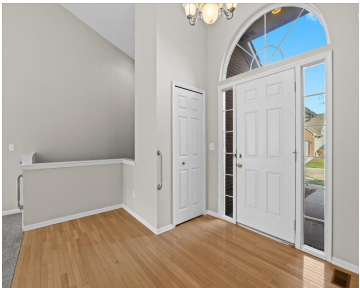
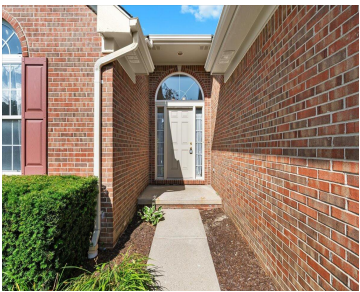
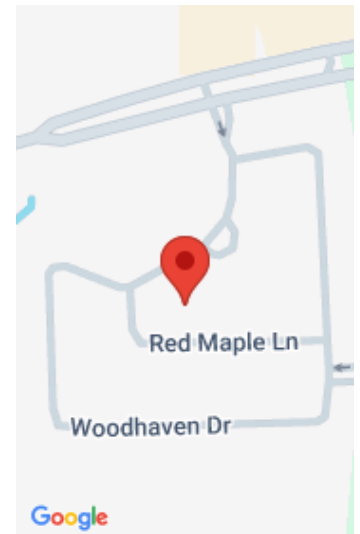


462, WOODHAVEN, COMMERCE TWP, MI, 48390
<https://tuckerbenner.com>



Freshly painted with brand new carpet, this inviting 2-bed, 2-bath condo in Commerce Township is sure to impress. Bathed in natural light from high vaulted ceilings and skylights, the open floor plan creates a bright and spacious feel. Beautiful original hardwood floors grace the kitchen, dining room, and entryway, adding warmth and charm. A lovely [...]

- 2 beds
- 2 baths
- Condominium
- Residential
- Active
- 1404 sq ft



Basics

Category: Residential	Type: Condominium
Status: Active	Bedrooms: 2 beds
Bathrooms: 2 baths	Area: 1404 sq ft
Lot size: 31.11 sq ft	Year built: 2003
Subdivision Name: Oakbrook Pointe Condo	Bathrooms Full: 2
Lot Size Acres: 31.11 acres	Rooms Total: 6
County: Oakland	

Building Details

Building Area Total: 1404 sq ft	Construction Materials: Brick
Architectural Style: Contemporary, Ranch	Sewer: Public
Heating: Forced Air	Stories: 1
Roof: Asphalt	Basement: Full

Amenities & Features

Laundry Features: Main Level	Flooring: Carpet, Wood
Parking Features: Attached	Fireplace Features: Family Room, Gas Log
Garage Spaces: 2	WaterSource: Public
Appliances: Dishwasher, Microwave, Range, Refrigerator	Patio And Porch Features: Deck
Fireplaces Total: 1	Cooling: Central Air

Fees & Taxes

Call us now

Tax Assessed Value: \$88,520

Tax Year: 2024

Association Fee Includes: Snow Removal, Lawn/Yard Care

Association Fee: \$375

Tax Annual Amount: \$2,819

School Information

High School District: Walled Lake

Miscellaneous

Road Surface Type: Paved

CrossStreet: M5 and Maple

Listing Terms: Cash, FHA, Conventional

Call us now