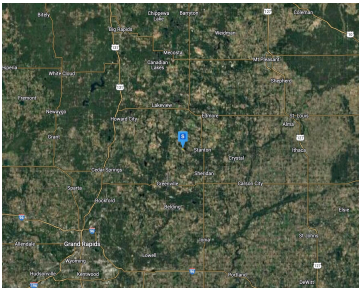
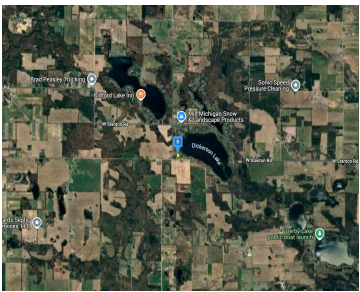
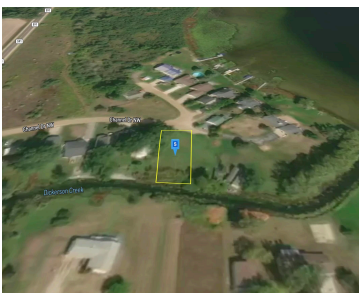


4689, CHANNEL, STANTON, MI, 48888

<https://tuckerbenner.com>



Build your dream retreat on this 8,000 sq ft lot in Stanton, offering a serene setting along the private channel of Dickerson Lake with 60 feet of channel frontage. Whether you're envisioning a retirement home, summer getaway, or family retreat, this property is perfect for creating lasting memories. Well and septic are required. Enjoy all [...]

- 0 baths
- Lot
- Land
- Active



Basics

Category: Land
Status: Active
Lot size: 0.19 sq ft
Lot Size Acres: 0.19 acres

Type: Lot
Bathrooms: 0 baths
Subdivision Name: Jensen's Grove
County: Montcalm

Amenities & Features

Utilities: Electricity Available, Electricity Connected
Waterfront Features: Stream/Creek

Fees & Taxes

Tax Assessed Value: \$10,188
Tax Annual Amount: \$512
Tax Year: 2025

School Information

High School District: Central Montcalm
Middle Or Junior School: Central Montcalm Middle School
HighSchool: Central Montcalm High School
Elementary School: Central Montcalm Elementary School

Miscellaneous

Road Surface Type: Paved
Listing Terms: Cash, Conventional
CrossStreet: Channel Dr NW

Call us now



Phone: (231)730-8781
Email: tuckerbennerteam@gmail.com
Address: 2747 Lakeshore Drive, Twin Lake, MI 49457

