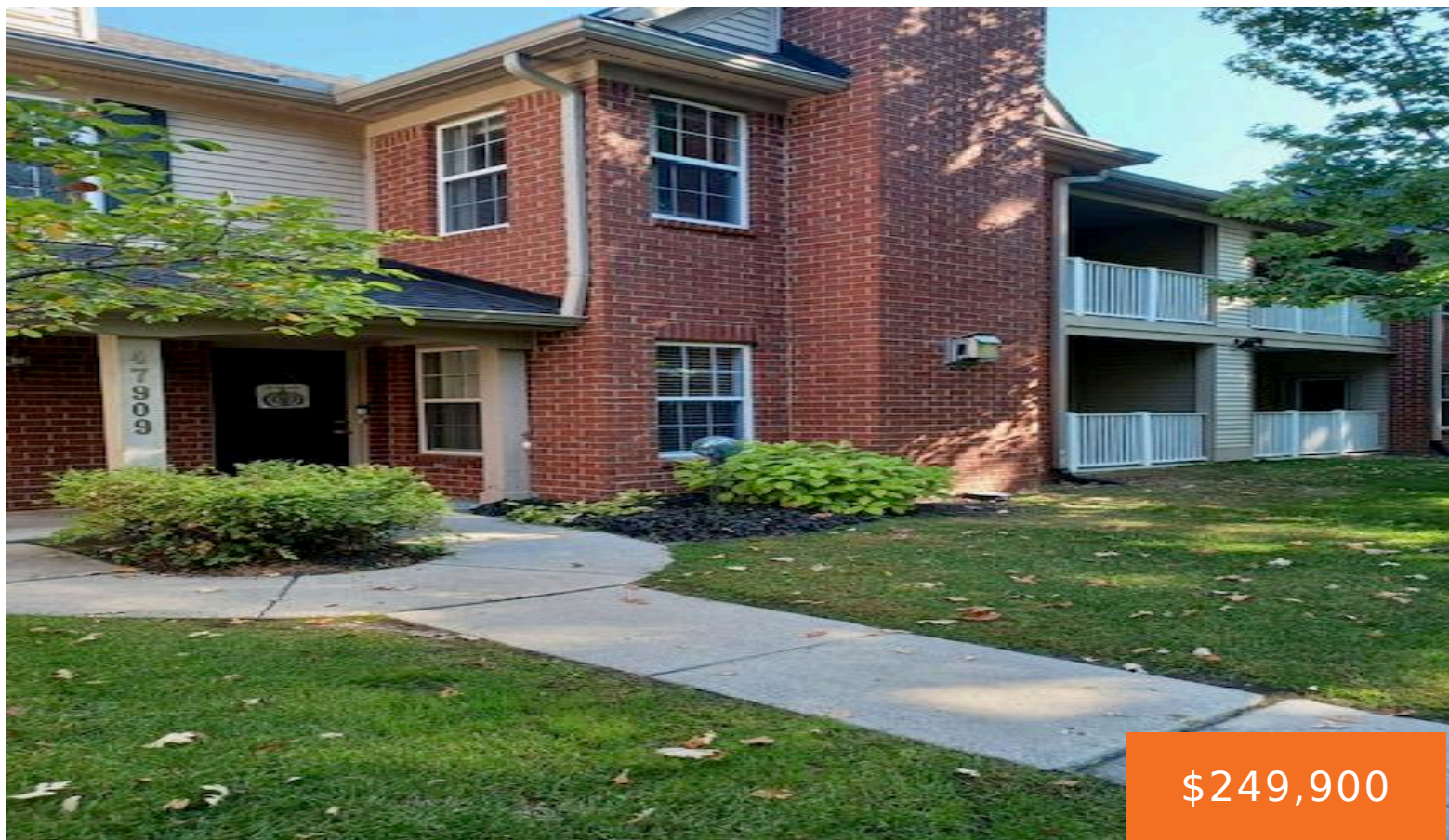


47909, CARDIFF, CANTON, MI, 48188

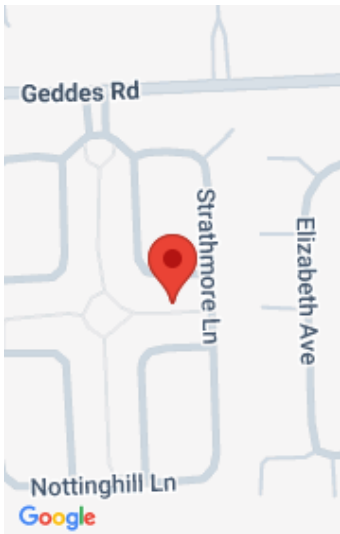
<https://tuckerbenner.com>



\$249,900

Welcome home to this RANCH condo situated in a perfect location in Canton. You will be excited about the updates and upgrades in this well loved home. No stairs and easy entry from the garage or front door. This magnificent condo offers 2 bedrooms, 2 baths, a great floor plan, open kitchen, gas fireplace, freshly [...]

- 2 beds
- 2 baths
- Condominium
- Residential
- Active
- 1402 sq ft



Call us now



Phone: (231)730-8781

Email: tuckerbennerteam@gmail.com

Address: 2747 Lakeshore Drive, Twin Lake, MI 49457



Basics

Category: Residential

Status: Active

Bathrooms: 2 baths

Lot size: 0.03 sq ft

Subdivision Name: CHATTERTON VILLAGE UNIT 100

Lot Size Acres: 0.03 acres

County: Wayne

Type: Condominium

Bedrooms: 2 beds

Area: 1402 sq ft

Year built: 2002

Bathrooms Full: 2

Rooms Total: 6

Building Details

Building Area Total: 0 sq ft

Construction Materials: Brick, Vinyl Siding

Architectural Style: Ranch

Sewer: Public

Heating: Forced Air

Roof: Asphalt

Basement: Slab

Amenities & Features

Laundry Features: In Unit, Main Level

Flooring: Carpet, Ceramic Tile, Laminate

Association Amenities: Playground, Pool

Fireplace Features: Family Room, Gas Log

WaterSource: Public

Interior Features: Broadband

Window Features: Screens, Insulated Windows

Cooling: Central Air

Pool Features: In Ground

Utilities: Cable Available, High-Speed Internet

Parking Features: Garage Door Opener, Attached

Garage Spaces: 1

Appliances: Dishwasher, Disposal, Dryer, Microwave, Range, Refrigerator, Washer

Lot Features: Sidewalk, Wooded

Patio And Porch Features: Porch(es)

Call us now

Fees & Taxes

Tax Assessed Value: \$90,251 **Association Fee Frequency:** Monthly
Association Fee: \$320 **Tax Year:** 2025
Tax Annual Amount: \$3,839 **Association Fee Includes:** Water, Trash, Snow Removal,
Sewer, Lawn/Yard Care

School Information

High School District: Van Buren

Miscellaneous

Road Surface Type: Paved **CrossStreet:** S of Geddess, W of Beck
Listing Terms: Cash, Conventional

Call us now