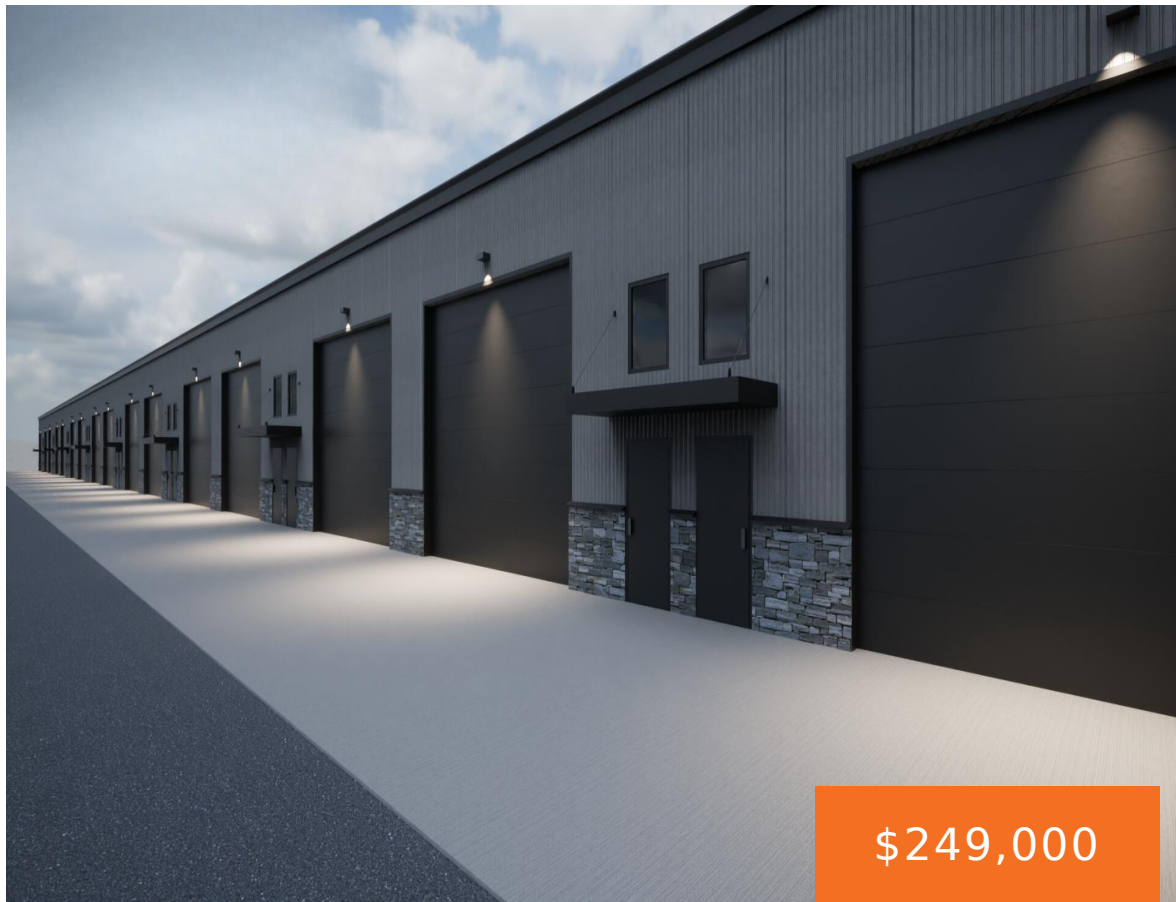


4848, ALLEN PARK, ALLENDALE, MI, 49401

<https://tuckerbenner.com>



Premium 24×60 heated storage solution for sale in Allendale, MI—perfect for RVs, boats, tools, or business equipment. Features include an 18×16 overhead door, a pedestrian door, a private bathroom, a hot water heater with a seperate sink, a floor drain, ceiling fans, ventilation, LED lighting, and a 150-amp electric system with outlets on every wall. [...]

- 0 baths
- Acreage
- Land
- Active



Call us now

Phone: (231)730-8781
Email: tuckerbennerteam@gmail.com
Address: 2747 Lakeshore Drive, Twin Lake, MI 49457

Basics

Category: Land

Status: Active

Lot size: 5.16 sq ft

County: Ottawa

Type: Acreage

Bathrooms: 0 baths

Lot Size Acres: 5.16 acres

Building Details

Sewer: Public Sewer

Current Use: Commercial

Amenities & Features

Utilities: Natural Gas Available, Electricity Available, Natural Gas Connected, Electricity Connected

WaterSource: Public

Lot Features: Site Condo

Fees & Taxes

Tax Assessed Value: \$20,165

Tax Year: 2024

Association Fee Includes: Snow Removal

Association Fee Frequency: Other

Tax Annual Amount: \$970

School Information

High School District: Allendale

Miscellaneous

Call us now

Road Surface Type: Paved

CrossStreet: Allen Park Dr. & 48th Ave

Listing Terms: Cash, Build to Suit, Conventional

Call us now



Phone: (231)730-8781
Email: tuckerbennerteam@gmail.com
Address: 2747 Lakeshore Drive, Twin Lake, MI 49457

