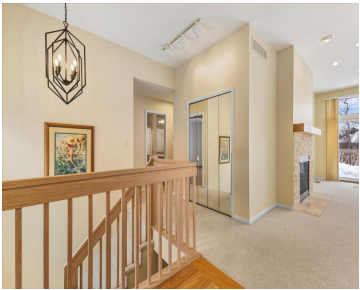


4853, LONE OAK, ANN ARBOR, MI, 48108

https://tuckerbenner.com

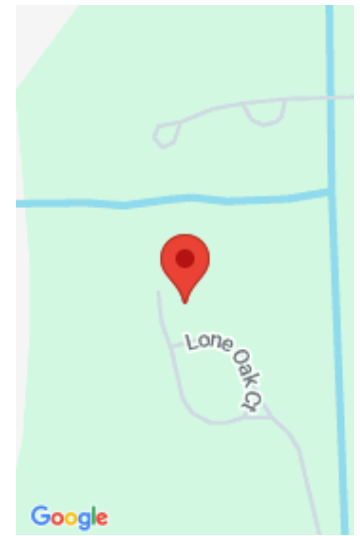


\$480,000



Beautifully maintained ranch condo in the highly desirable Lone Oak Condos of Stonebridge, ideally situated on a quiet cul-de-sac overlooking a stream and the 7th fairway. This home offers 1,448 sq ft of above-grade living space plus a fully finished 1,280 sq ft basement, providing generous space and flexibility. The living room features an updated [...]

- 3 beds
- 3 baths
- Condominium
- Residential
- Active
- 2728 sq ft



Call us now

Phone: (231)730-8781
Email: tuckerbennerteam@gmail.com
Address: 2747 Lakeshore Drive, Twin Lake, MI 49457

Basics

Category: Residential	Type: Condominium
Status: Active	Bedrooms: 3 beds
Bathrooms: 3 baths	Area: 2728 sq ft
Year built: 1994	Subdivision Name: Stonebridge
Bathrooms Full: 3	Lot Size Acres: 0 acres
Rooms Total: 5	County: Washtenaw

Building Details

Building Area Total: 1448 sq ft	Construction Materials: Brick
Architectural Style: Ranch	Sewer: Public
Heating: Forced Air	Stories: 1
Roof: Shingle	Basement: Daylight, Full

Amenities & Features

Laundry Features: Gas Dryer Hookup, Laundry Room, Main Level, Sink, Washer Hookup	Flooring: Carpet, Ceramic Tile, Wood
Utilities: Cable Available, Phone Connected	Parking Features: Garage Faces Front, Garage Door Opener, Attached
Fireplace Features: Gas Log, Living Room	Garage Spaces: 2
WaterSource: Public	Appliances: Humidifier, Dishwasher, Disposal, Dryer, Microwave, Range, Washer
Interior Features: Ceiling Fan(s), Broadband, Garage Door Opener, Eat-in Kitchen	Lot Features: Wooded, Golf Community, Cul-De-Sac
Window Features: Skylight(s), Screens, Window Treatments	Patio And Porch Features: Covered, Deck, Porch(es)
Fireplaces Total: 1	Cooling: Central Air

Call us now

Fees & Taxes

Tax Assessed Value: \$166,427 **Association Fee Frequency:** Monthly
Association Fee: \$475 **Tax Year:** 2025
Tax Annual Amount: \$6,748 **Association Fee Includes:** Snow Removal, Lawn/Yard Care

School Information

High School District: Ann Arbor **HighSchool:** Pioneer High School
Middle Or Junior School: Tappan Middle School **Elementary School:** Pattengill Elementary School

Miscellaneous

Road Surface Type: Paved **CrossStreet:** W Ellsworth Rd and Lohr Rd
Listing Terms: Cash, Conventional

Call us now