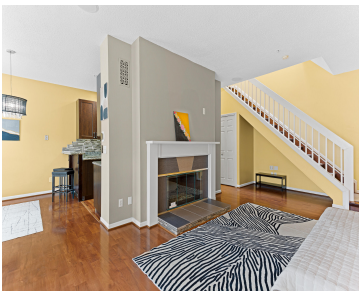


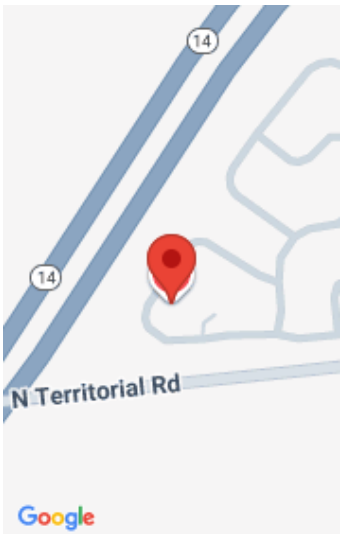
49667, DRAPER, PLYMOUTH, MI, 48170

<https://tuckerbenner.com>



Welcome to this inviting and meticulously maintained condominium located in the desirable Plymouth Pointe Association. Featuring 2 bedrooms and 3.5 bathrooms, this home offers comfort, functionality, and thoughtful upgrades throughout. The open-concept main level is enhanced with radiant floor heating and features a spacious living room with a cozy fireplace, a dining area, a modern [...]

- 2 beds
- 4 baths
- Condominium
- Residential
- Active
- 1476 sq ft



Basics

Category: Residential

Status: Active

Bathrooms: 4 baths

Lot size: 0 sq ft

Bathrooms Full: 3

Rooms Total: 8

Bathrooms Half: 1

Type: Condominium

Bedrooms: 2 beds

Area: 1476 sq ft

Year built: 1994

Lot Size Acres: 0 acres

County: Wayne

Building Details

Building Area Total: 1476 sq ft

Sewer: Public

Stories: 2

Basement: Slab

Construction Materials: Brick, Vinyl Siding

Heating: Forced Air

Levels: Tri-Level

Amenities & Features

Laundry Features: Main Level

Association Amenities: Clubhouse, Pool

Fireplace Features: Gas Log, Living Room

WaterSource: Public

Fireplaces Total: 1

Pool Features: In Ground, Outdoor/Above

Parking Features: Tandem, Attached

Garage Spaces: 2

Appliances: Dishwasher, Disposal, Dryer, Microwave, Range, Refrigerator, Washer

Cooling: Central Air

Fees & Taxes

Call us now

Tax Assessed Value: \$96,700 **Association Fee Frequency:** Monthly

Association Fee: \$395

Tax Year: 2024

Tax Annual Amount: \$4,784

Association Fee Includes: Water, Trash, Snow Removal,
Sewer, Lawn/Yard Care

School Information

High School District: Plymouth-Canton

Miscellaneous

CrossStreet: North Territorial/Ridge Rd

Listing Terms: Cash, Conventional

Call us now

Phone: (231)730-8781

Email: tuckerbennerteam@gmail.com

Address: 2747 Lakeshore Drive, Twin Lake, MI 49457