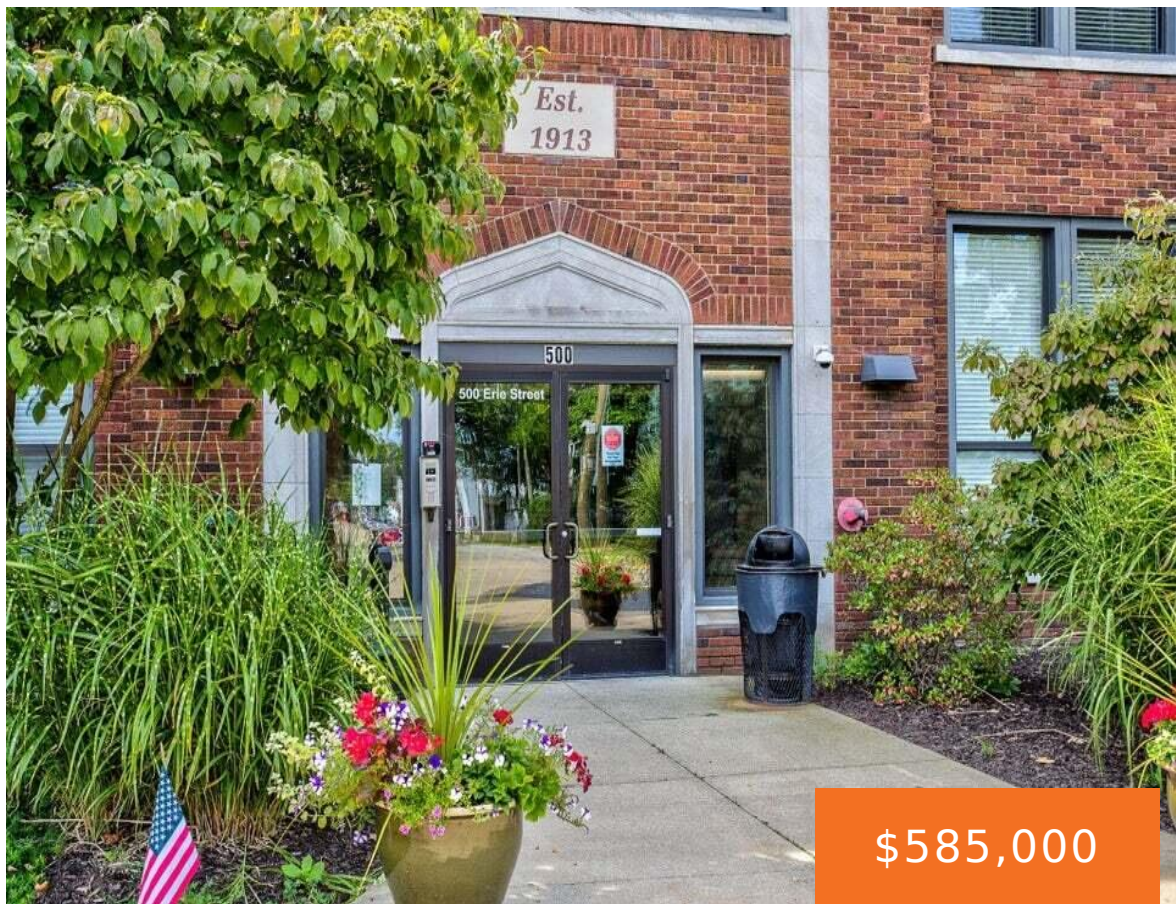
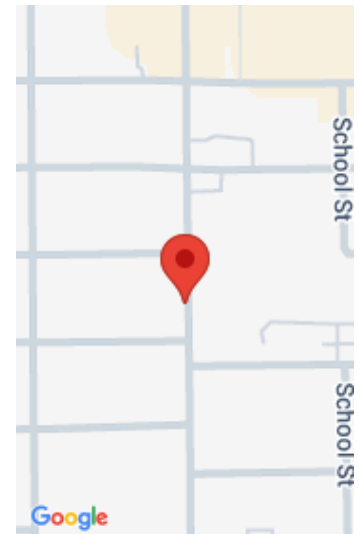


500, ERIE, SOUTH HAVEN, MI, 49090  
https://tuckerbenner.com



Welcome to Central Lofts, conveniently located in downtown South Haven and only a few blocks to the South Beach. This beautiful 2nd floor unit boasts 3 bedrooms, 2.5 baths, 16’ ceilings, oversized windows bringing in lots of natural light, W/D in unit, stainless steel appliances and granite countertops. The condo is well-appointed with quality furnishings [...]

- 3 beds
- 3 baths
- Condominium
- Residential
- Active
- 1730 sq ft



# Basics

**Category:** Residential  
**Status:** Active  
**Bathrooms:** 3 baths  
**Lot size:** 0.34 sq ft  
**Bathrooms Full:** 2  
**Rooms Total:** 7  
**Bathrooms Half:** 1

**Type:** Condominium  
**Bedrooms:** 3 beds  
**Area:** 1730 sq ft  
**Year built:** 1913  
**Lot Size Acres:** 0.34 acres  
**County:** Van Buren

# Building Details

**Building Area Total:** 1730 sq ft  
**Architectural Style:** Other  
**Heating:** Forced Air  
**Roof:** Rubber

**Construction Materials:** Brick  
**Sewer:** Public  
**Stories:** 1  
**Basement:** Slab

# Amenities & Features

**Laundry Features:** In Unit, Main Level  
**Flooring:** Wood

**Pool Features:** Indoor  
**Utilities:** Phone Available, Natural Gas Available, Cable Connected, High-Speed Internet

**Association Amenities:** Cable TV, Fitness Center, Indoor Pool, Pets Allowed, Security, Spa/Hot Tub, Other

**WaterSource:** Public

**Appliances:** Dishwasher, Dryer, Microwave, Oven, Range, Refrigerator, Washer

**Interior Features:** Ceiling Fan(s), Hot Tub Spa

**Window Features:** Low-Emissivity Windows, Screens, Insulated Windows, Window Treatments

**Patio And Porch Features:** Patio

**Cooling:** Central Air

Call us now



## Fees & Taxes

**Tax Assessed Value:** \$193,488

**Association Fee Frequency:** Monthly

**Association Fee:** \$620

**Tax Year:** 2024

**Tax Annual Amount:** \$11,884

**Association Fee Includes:** Water, Trash, Snow Removal,  
Sewer, Lawn/Yard Care, Cable/Satellite

## School Information

**High School District:** South Haven

## Miscellaneous

**Road Surface Type:** Paved

**CrossStreet:** School & Erie

**Listing Terms:** Cash, Conventional

**Call us now**