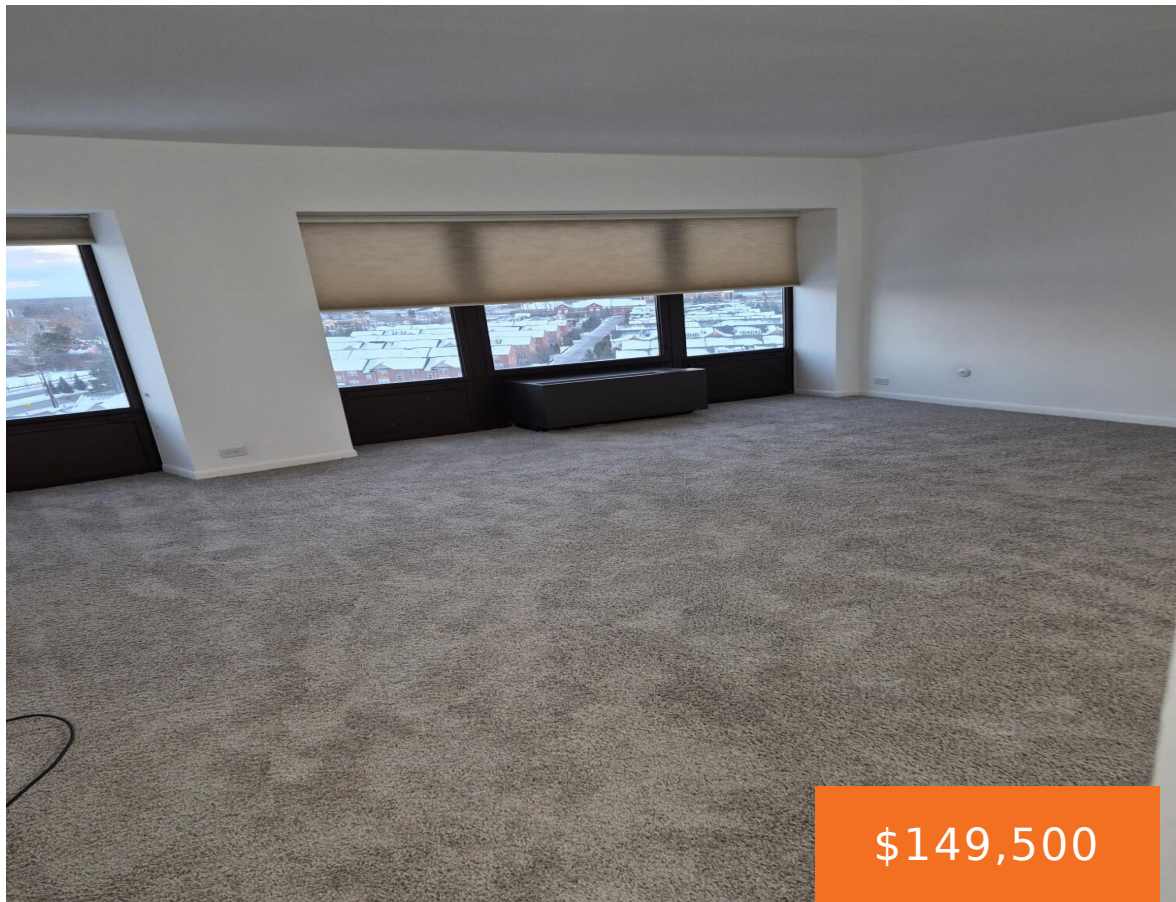


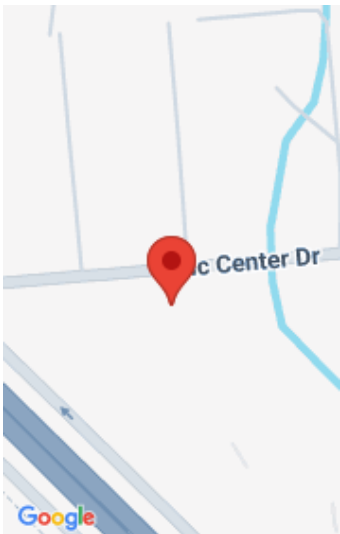
5000, CIVIC CENTER, SOUTHFIELD, MI, 48075

<https://tuckerbenner.com>



Cable Available,, High Rise, Elevator, High Speed Internet Available Pets Allowed, New Kitchen Appliance's, Stove, Refrigerator, Microwave, Dishwasher, Sink Faucet. Original Stacked Washer & Dryer

- 2 beds
- 2 baths
- Condominium
- Residential
- Active
- 840 sq ft



Call us now



Phone: (231)730-8781  
Email: [tuckerbennerteam@gmail.com](mailto:tuckerbennerteam@gmail.com)  
Address: 2747 Lakeshore Drive, Twin Lake, MI 49457



# Basics

**Category:** Residential  
**Status:** Active  
**Bathrooms:** 2 baths  
**Year built:** 1982  
**Rooms Total:** 4

**Type:** Condominium  
**Bedrooms:** 2 beds  
**Area:** 840 sq ft  
**Bathrooms Full:** 2  
**County:** Oakland

# Building Details

**Building Area Total:** 840 sq ft    **Construction Materials:** Block, Brick, Concrete  
**Architectural Style:** Other    **Sewer:** Public  
**Heating:** Heat Pump, Hot Water    **Stories:** 13  
**Basement:** Other

# Amenities & Features

**Laundry Features:** In Unit, Laundry Closet    **Pool Features:** In Ground, Outdoor/Above  
**Flooring:** Carpet, Laminate    **Utilities:** Cable Available  
**Association Amenities:** Meeting Room    **Parking Features:** Detached  
**Fireplace Features:** Bath, Bedroom    **Garage Spaces:** 1  
**WaterSource:** Public    **Appliances:** Dishwasher, Disposal, Dryer, Microwave, Range, Refrigerator, Washer  
**Interior Features:** Elevator, Eat-in Kitchen    **Lot Features:** Golf Community  
**Window Features:** Insulated Windows    **Cooling:** Window Unit(s)

# Fees & Taxes

Call us now

**Tax Assessed Value:** \$34,718

**Association Fee:** \$751

**Tax Annual Amount:** \$3,600

**Association Fee Frequency:** Monthly

**Tax Year:** 2025

**Association Fee Includes:** Water, Trash, Snow Removal,  
Sewer, Lawn/Yard Care

## School Information

**High School District:** Southfield

**Middle Or Junior School:** Abbott  
Middle School

**HighSchool:** Southfield High School for the Arts &  
Technology

**Elementary School:** Abbot Elementary School

## Miscellaneous

**CrossStreet:** West of Evergreen

**Listing Terms:** Cash, Conventional

Call us now