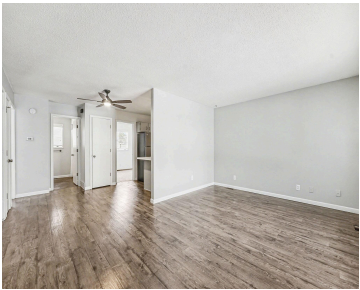


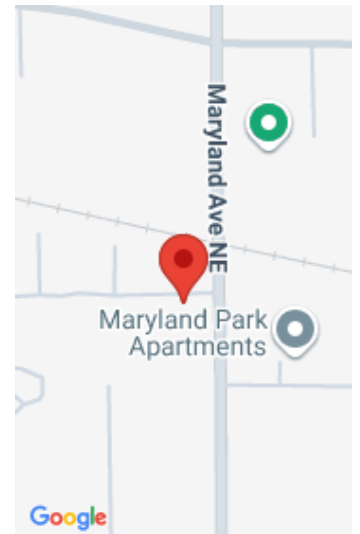
517, MARYLAND, GRAND RAPIDS, MI, 49503

https://tuckerbenner.com



This 2 Bed 1 Bath NE Condo has a lot to offer it’s new owners. New carpet in bedrooms and lots of fresh paint throughout. Close to several colleges easy access to 96 and just a short 5-10 minute drive to the Medical Mile and Downtown. As you enter the front door you’re greeted by [...]

- 2 beds
- 1 bath
- Condominium
- Residential
- Active
- 942 sq ft



Call us now

Basics

Category: Residential

Status: Active

Bathrooms: 1 bath

Year built: 1982

Lot Size Acres: 0 acres

County: Kent

Type: Condominium

Bedrooms: 2 beds

Area: 942 sq ft

Bathrooms Full: 1

Rooms Total: 5

Building Details

Building Area Total: 756 sq ft

Architectural Style: Ranch

Heating: Forced Air

Roof: Asphalt, Shingle

Construction Materials: Brick, Vinyl Siding

Sewer: Public

Stories: 1

Basement: Crawl Space, Partial

Amenities & Features

Laundry Features: Gas Dryer Hookup, In Basement, Washer Hookup

Utilities: Natural Gas Available, Electricity Available, Natural Gas Connected

Parking Features: Garage Faces Front, Garage Door Opener, Attached

WaterSource: Public

Interior Features: Ceiling Fan(s), Garage Door Opener

Window Features: Screens, Insulated Windows

Cooling: Central Air

Flooring: Carpet, Vinyl

Association Amenities: Pets Allowed

Garage Spaces: 1

Appliances: Dishwasher, Disposal, Dryer, Oven, Refrigerator, Washer

Lot Features: Level

Patio And Porch Features: Patio

Fees & Taxes

Call us now



Tax Assessed Value: \$51,797

Association Fee Frequency: Monthly

Association Fee: \$280

Tax Year: 2026

Tax Annual Amount: \$2,604.20

Association Fee Includes: Water, Trash, Snow Removal,
Sewer, Lawn/Yard Care

School Information

High School District: Grand Rapids

Miscellaneous

Road Surface Type: Paved

CrossStreet: Michigan ST NE

Listing Terms: Cash, Conventional

Call us now



Phone: (231)730-8781

Email: tuckerbennerteam@gmail.com

Address: 2747 Lakeshore Drive, Twin Lake, MI 49457

