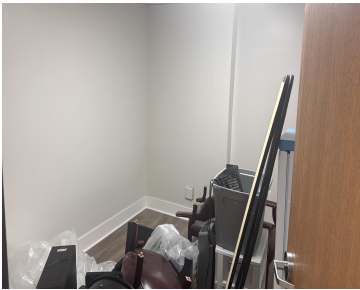


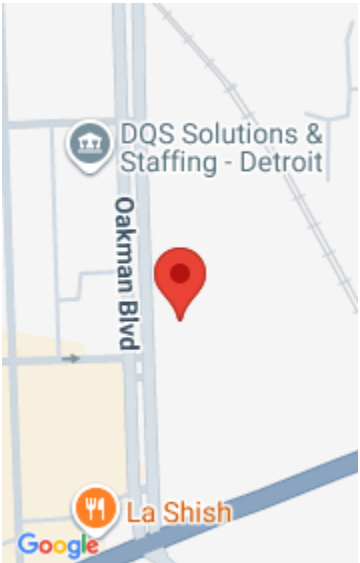
5220, OAKMAN, DEARBORN, MI, 48126

<https://tuckerbenner.com>



Approximately 1800 Sq Feet Office or medical space for lease in a medical center. Newley remodeled space includes a reception area, three to four exam rooms,

- 0 baths
- Office
- Commercial Lease
- Active



Call us now

Phone: (231)730-8781
Email: tuckerbennerteam@gmail.com
Address: 2747 Lakeshore Drive, Twin Lake, MI 49457

Basics

Category: Commercial Lease
Status: Active
Lot size: 0.51 sq ft
Lot Size Acres: 0.51 acres
County: Wayne

Type: Office
Bathrooms: 0 baths
Year built: 1964
Business Type: Professional Service

Building Details

Building Area Total: 1800 sq ft
Sewer: Public Sewer
Foundation Details: Slab

Construction Materials: Brick
Heating: Forced Air
Number Of Buildings: 1

Amenities & Features

Utilities: Natural Gas Connected, Electricity Connected, Water Available, **WaterSource:** Public Sewer Available

Fireplaces Total: 1

School Information

High School District: Dearborn

Miscellaneous

CrossStreet: MICHIGAN & FORD

Call us now