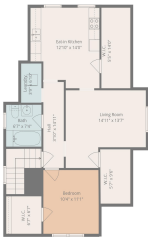


535, ARCHER, ST. JOSEPH, MI, 49085

https://tuckerbenner.com

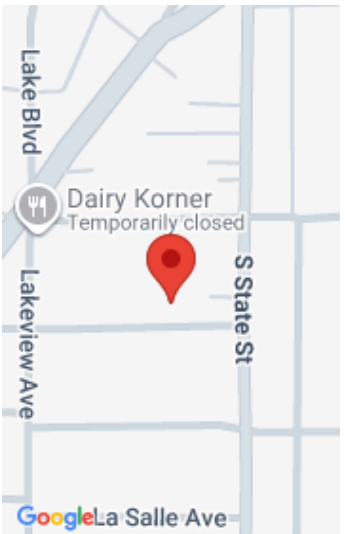


**REALTOR**  
TOTAL 871 sq. ft.  
Includes: 1 car, 1/2 bath, 100 sq. ft.  
EXCLUDED AREA: PORCH 30 sq. ft., LOAN COLOS 31 sq. ft., WALKS 87 sq. ft.



Located just two blocks from Lake Michigan and the vibrant Downtown Historical District. This Upper floor apartment offers a comfortable one-bedroom layout with a large living room, three walk-in closets, a roomy kitchen, updated bath, private, attached laundry room, and a private entrance. Off street parking and a large backyard for reading or relaxing. Gas, [...]

- 1 bed
- 1 bath
- Apartment
- Residential Lease
- Active
- 711 sq ft



Call us now

Phone: (231)730-8781

Email: tuckerbennerteam@gmail.com

Address: 2747 Lakeshore Drive, Twin Lake, MI 49457

# Basics

**Category:** Residential Lease  
**Status:** Active  
**Bathrooms:** 1 bath  
**Lot size:** 0.14 sq ft  
**Bathrooms Full:** 1  
**Rooms Total:** 5

**Type:** Apartment  
**Bedrooms:** 1 bed  
**Area:** 711 sq ft  
**Year built:** 1915  
**Lot Size Acres:** 0.14 acres  
**County:** Berrien

# Building Details

**Architectural Style:** Traditional  
**Stories:** 2

**Heating:** Hot Water  
**Basement:** Full

# Amenities & Features

**Laundry Features:** In Unit, Upper Level

**Cooling:** CeilingFan, Window Unit(s)

# School Information

**High School District:** St. Joseph  
**Middle Or Junior School:** Upton Middle School

**HighSchool:** St. Joseph High School

# Miscellaneous

**CrossStreet:** Lakeview and South State

**Owner Pays:** Air Conditioning, Electricity, Heat, Lawn/Yard Care, Sewer, Snow Removal, Taxes, Water

**Tenant Pays:** Cable/Satellite, Internet Access, Phone, WIFI

Call us now

