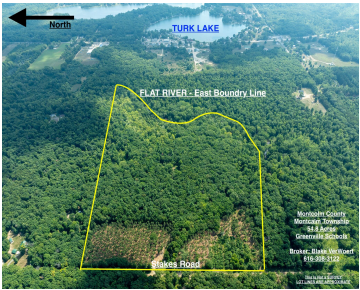


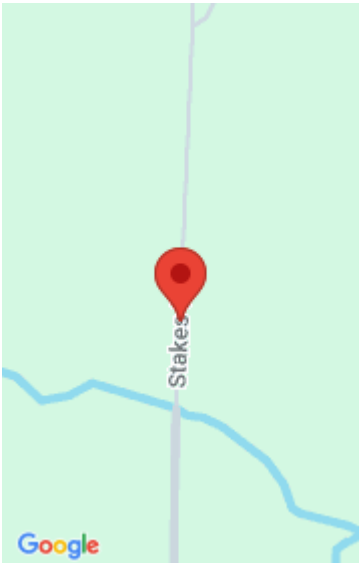
548, STAKES, GOWEN, MI, 49326

https://tuckerbenner.com



A rare opportunity to own 54.8 acres with over 1,500 feet of frontage on the scenic Flat River in Montcalm County. Located just west of Turk Lake in Montcalm Township and within Greenville Schools, this property offers the perfect blend of natural beauty and recreational opportunity. The land features gorgeous timber, including mature oak stands, [...]

- 0 baths
- Acreage
- Land
- Active



Basics

Category: Land

Status: Active

Lot size: 54.8 sq ft

County: Montcalm

Type: Acreage

Bathrooms: 0 baths

Lot Size Acres: 54.8 acres

Building Details

Current Use: Tree Farm, Residential, Recreational, Hunting, Farm

Amenities & Features

Utilities: Electricity Available, Cable Available, Phone Available, None

Waterfront Features: River, Stream/Creek

Lot Features: Level, Rolling Hills, Low Bank, High Bank, Buildable, Cleared, Recreational, Tillable, Wetland Area, Wooded

Fees & Taxes

Tax Assessed Value: \$101,151

Tax Year: 2025

School Information

High School District: Greenville

Miscellaneous

Call us now

CrossStreet: Colby Road

Listing Terms: Cash, 2nd Mortgage, Conventional

Call us now



Phone: (231)730-8781
Email: tuckerbennerteam@gmail.com
Address: 2747 Lakeshore Drive, Twin Lake, MI 49457

