

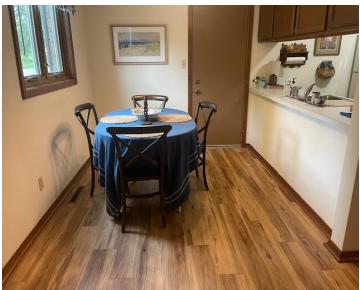
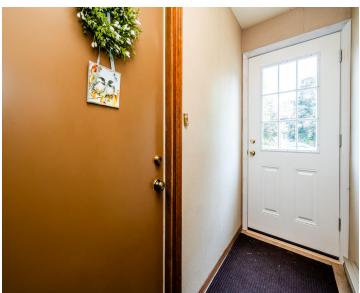
5410, COUNTRY AIRE, COLOMA, MI, 49038

<https://tuckerbenner.com>

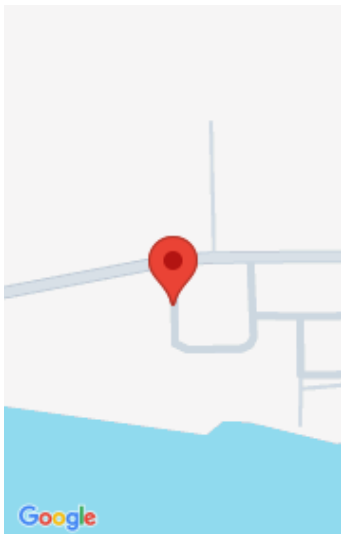


\$300,000

This Paw Paw Lake Condo in Country Aire is just right! Picture your family boating, skiing, wakeboarding and having lots of fun at the lake. No work, just relax, and enjoy. 2 bedrooms and 2 baths. New flooring 2025, New HVAC Blower in 2021, new garage door, New Anderson windows and Water proofing in the [...]



- 2 beds
- 2 baths
- Condominium
- Residential
- Active
- 951 sq ft



Call us now

Phone: (231)730-8781
Email: tuckerbennerteam@gmail.com
Address: 2747 Lakeshore Drive, Twin Lake, MI 49457

Basics

Category: Residential

Status: Active

Bathrooms: 2 baths

Lot size: 3.6 sq ft

Bathrooms Full: 1

Rooms Total: 8

Bathrooms Half: 1

Type: Condominium

Bedrooms: 2 beds

Area: 951 sq ft

Year built: 1980

Lot Size Acres: 3.6 acres

County: Berrien

Building Details

Building Area Total: 951 sq ft

Architectural Style: Traditional

Heating: Forced Air

Roof: Composition

Construction Materials: Brick, Other

Sewer: Public

Stories: 1

Basement: Crawl Space

Amenities & Features

Laundry Features: Laundry Closet, Main Level

Utilities: Phone Available, Natural Gas Available, Electricity Available, Cable Available, Natural Gas Connected

Fencing: Fenced Back

Waterfront Features: Lake

WaterSource: Well

Interior Features: Broadband

Window Features: Insulated Windows, Window Treatments

Cooling: Central Air

Flooring: Tile, Vinyl

Association Amenities: Beach Area, End Unit, Pets Allowed

Parking Features: Detached

Garage Spaces: 1

Appliances: Dryer, Oven, Range, Refrigerator, Washer

Lot Features: Level

Patio And Porch Features: Patio

Call us now

Fees & Taxes

Tax Assessed Value: \$70,123

Association Fee Frequency: Monthly

Association Fee: \$300

Tax Year: 2024

Tax Annual Amount: \$3,663

Association Fee Includes: Other, Water, Trash, Snow Removal, Sewer, Lawn/Yard Care

School Information

High School District: Coloma

Miscellaneous

Road Surface Type: Paved

CrossStreet: Johnson & Paw Paw Lake RD

Listing Terms: Cash, Conventional

Call us now