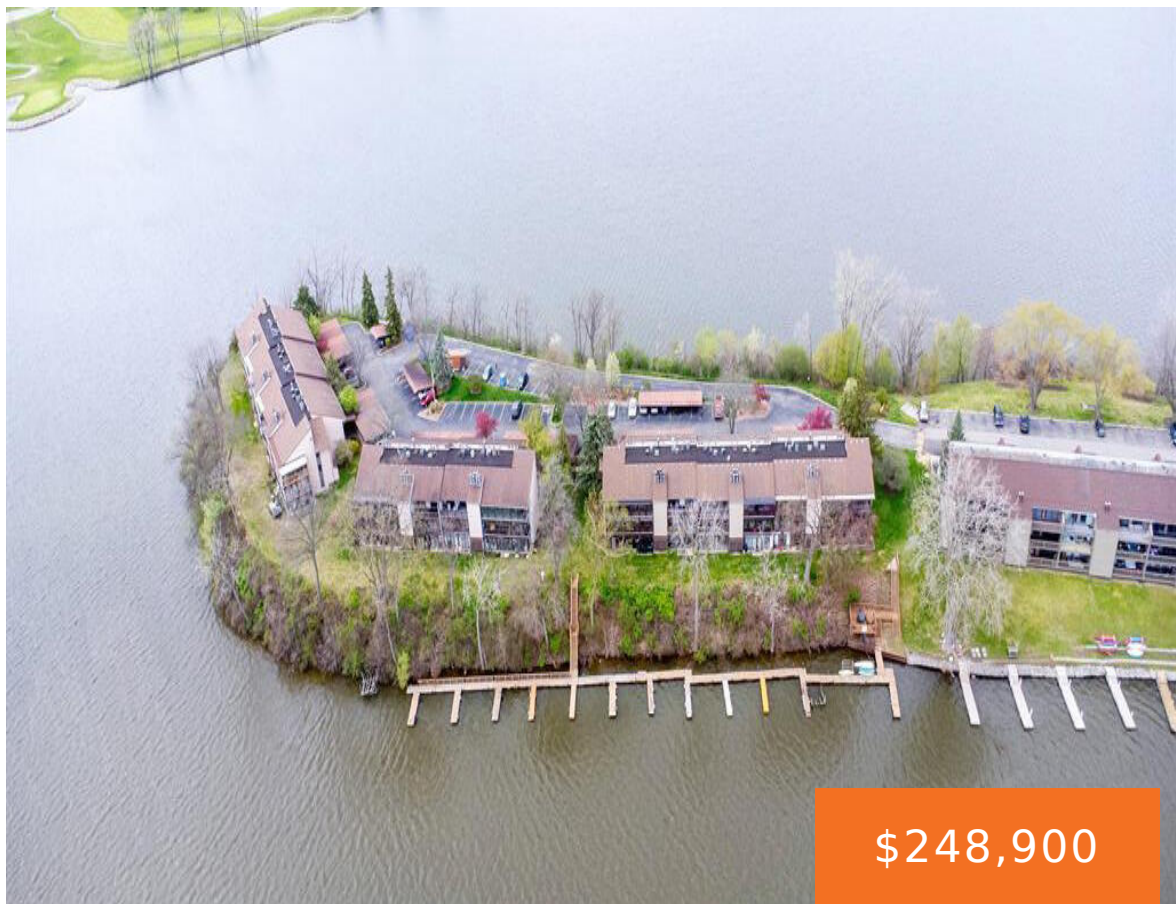


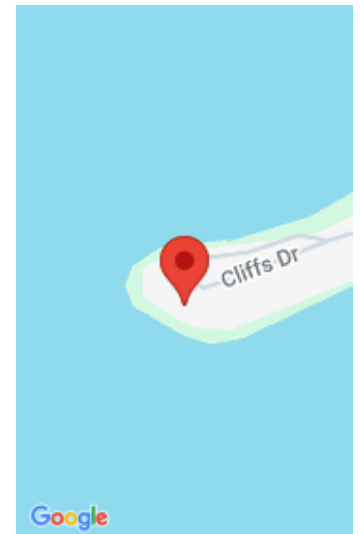
550, CLIFFS, YPSILANTI, MI, 48198

https://tuckerbenner.com



Rear offering Ground floor unit at North Point on the Cliffs Condo. Spectacular Year round view of Ford lake. 2 bedroom with 2 Full baths, Includes all appliances, Gas Fireplace, master Bath and 2 boat slips. Washer and Dryer are in unit. Low living expenses. Assoc fee includes Gas, Water,Cable and all exterior maintenance including [...]

- 2 beds
- 2 baths
- Condominium
- Residential
- Active
- 1134 sq ft



Call us now



Phone: (231)730-8781

Email: tuckerbennerteam@gmail.com

Address: 2747 Lakeshore Drive, Twin Lake, MI 49457



# Basics

**Category:** Residential  
**Status:** Active  
**Bathrooms:** 2 baths  
**Year built:** 1982  
**Lot Size Acres:** 0 acres  
**County:** Washtenaw

**Type:** Condominium  
**Bedrooms:** 2 beds  
**Area:** 1134 sq ft  
**Bathrooms Full:** 2  
**Rooms Total:** 8

# Building Details

**Building Area Total:** 1134 sq ft  
**Architectural Style:** Ranch  
**Heating:** Forced Air  
**Basement:** Slab

**Construction Materials:** Vinyl Siding  
**Sewer:** Public  
**Stories:** 1

# Amenities & Features

Call us now

**Laundry Features:** Electric Dryer Hookup, In Unit, Laundry Closet, Laundry Room, Main Level, Sink, Washer Hookup

**Flooring:** Carpet, Ceramic Tile, Vinyl

**Association Amenities:** Cable TV, Pets Allowed, Pool

**Waterfront Features:** Lake

**WaterSource:** Public

**Interior Features:** Ceiling Fan(s), Broadband, Eat-in Kitchen

**Window Features:** Screens, Window Treatments

**Fireplaces Total:** 1

**Pool Features:** In Ground

**Utilities:** Natural Gas Available, Electricity Available, Cable Available, Natural Gas Connected, Cable Connected, Storm Sewer

**Parking Features:** Detached, Carport

**Fireplace Features:** Gas Log, Living Room

**Appliances:** Built-In Electric Oven, Dishwasher, Disposal, Dryer, Microwave, Oven, Range, Refrigerator, Washer

**Lot Features:** Site Condo

**Patio And Porch Features:** 3 Season Room, Enclosed

**Cooling:** Central Air

## Fees & Taxes

**Tax Assessed Value:** \$40,712

**Association Fee:** \$466

**Tax Annual Amount:** \$2,628.34

**Association Fee Frequency:** Monthly

**Tax Year:** 2025

**Association Fee Includes:** Water, Trash, Snow Removal, Sewer, Lawn/Yard Care, Heat, Cable/Satellite

## School Information

**High School District:** Ypsilanti

**HighSchool:** Ypsilanti Community High School

## Miscellaneous

**Road Surface Type:** Paved

**CrossStreet:** Grove, North side of Ford Lk

**Listing Terms:** Cash, Conventional

Call us now