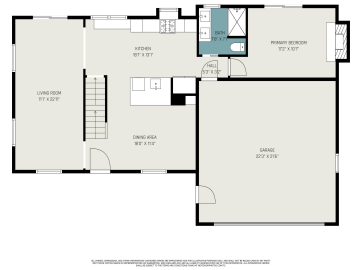


5551, BRATTLEBORO, KENTWOOD, MI, 49508

https://tuckerbenner.com

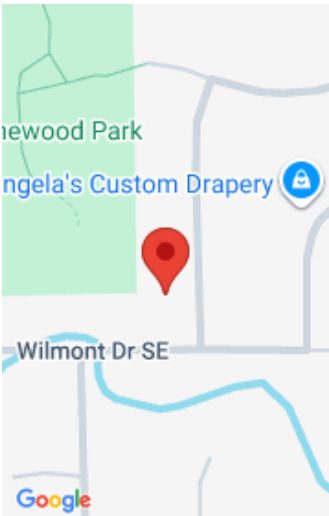


\$375,000



Updates Galore! Almost every inch of the interior of this home has been redone. New flooring, remodeled bathrooms and a remodeled kitchen with quartz countertops and new appliances. This Princeton Estates traditional 2 story home features a main floor primary bedroom and bathroom plus 4 additional bedrooms and a bathroom on the upper level. The [...]

- 5 beds
- 3 baths
- Single Family Residence
- Residential
- Active
- 2508 sq ft



Basics

Category: Residential

Status: Active

Bathrooms: 3 baths

Lot size: 0.31 sq ft

Subdivision Name: Princeton Estates

Lot Size Acres: 0.31 acres

County: Kent

Type: Single Family Residence

Bedrooms: 5 beds

Area: 2508 sq ft

Year built: 1984

Bathrooms Full: 2

Rooms Total: 8

Bathrooms Half: 1

Building Details

Building Area Total: 1788 sq ft

Construction Materials: Aluminum Siding, Brick, Vinyl Siding

Architectural Style: Traditional

Sewer: Public

Heating: Forced Air

Stories: 3

Roof: Asphalt, Shingle

Basement: Full

Amenities & Features

Laundry Features: Gas Dryer Hookup, Upper Level, Washer Hookup

Utilities: Phone Available, Natural Gas Available, Electricity Available, Cable Available, Natural Gas Connected, Cable Connected, Storm Sewer, High-Speed Internet

Fireplace Features: Primary Bedroom, Wood Burning

WaterSource: Public

Interior Features: Broadband, Garage Door Opener, Wet Bar, Eat-in Kitchen

Patio And Porch Features: Patio

Cooling: Central Air

Flooring: Ceramic Tile, Laminate, Vinyl

Parking Features: Garage Faces Front, Garage Door Opener, Attached

Garage Spaces: 2

Appliances: Built-In Gas Oven, Cooktop, Dishwasher, Dryer, Microwave, Oven, Refrigerator, Washer

Lot Features: Level, Sidewalk

Fireplaces Total: 1

Call us now



Fees & Taxes

Tax Assessed Value: \$105,598
Tax Annual Amount: \$4,087

Tax Year: 2025

School Information

High School District: Kentwood
Middle Or Junior School: Pinewood Middle School

HighSchool: East Kentwood High School
Elementary School: Discovery Elementary School

Miscellaneous

Road Surface Type: Paved
CrossStreet: 52nd and Kalamazoo
Listing Terms: Cash, FHA, VA Loan, MSHDA, Conventional

Call us now