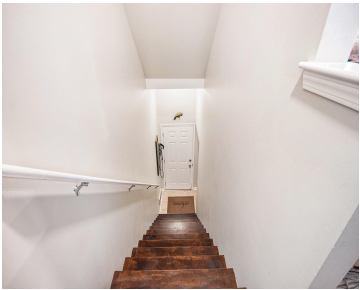


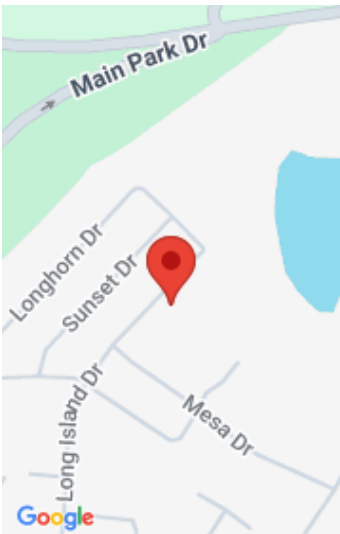
56607, LONG ISLAND, UTICA, MI, 48316

https://tuckerbenner.com



Welcome to this beautifully updated condo in one of Shelby Township’s most desirable communities. Just a short walk to Stony Creek Metropark and minutes from the expressway, this condo combines modern comfort, convenience, and low-maintenance living. Inside, you’ll find an open floor plan filled with natural light, highlighted by a spacious living area and access [...]

- 2 beds
- 3 baths
- Condominium
- Residential
- Active
- 1377 sq ft



Call us now

Phone: (231)730-8781

Email: tuckerbennerteam@gmail.com

Address: 2747 Lakeshore Drive, Twin Lake, MI 49457

Basics

Category: Residential

Status: Active

Bathrooms: 3 baths

Lot size: 27.05 sq ft

Bathrooms Full: 2

Rooms Total: 2

Bathrooms Half: 1

Type: Condominium

Bedrooms: 2 beds

Area: 1377 sq ft

Year built: 2004

Lot Size Acres: 27.05 acres

County: Macomb

Building Details

Building Area Total: 1377 sq ft

Architectural Style: Colonial

Heating: Forced Air

Roof: Asphalt

Construction Materials: Brick, Vinyl Siding

Sewer: Public

Stories: 2

Basement: Slab

Amenities & Features

Laundry Features: Electric Dryer Hookup, Upper Level

Parking Features: Garage Door Opener, Attached

WaterSource: Public

Interior Features: Eat-in Kitchen

Cooling: Central Air

Flooring: Carpet, Ceramic Tile, Engineered Hardwood

Garage Spaces: 2.5

Appliances: Dishwasher, Dryer, Microwave, Oven, Refrigerator, Washer

Exterior Features: Balcony

Fees & Taxes

Call us now

Tax Assessed Value: \$103,965

Association Fee Frequency: Monthly

Association Fee: \$275

Tax Year: 2024

Tax Annual Amount: \$3,198

Association Fee Includes: Other, Snow Removal

School Information

High School District: Utica

Miscellaneous

Road Surface Type: Paved

CrossStreet: S of 26 Mile / W of Mound

Listing Terms: Cash, Conventional

Call us now