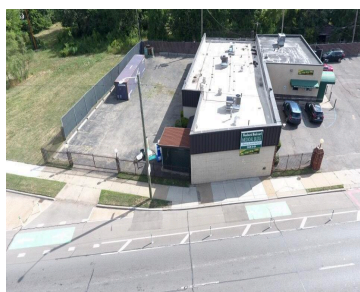
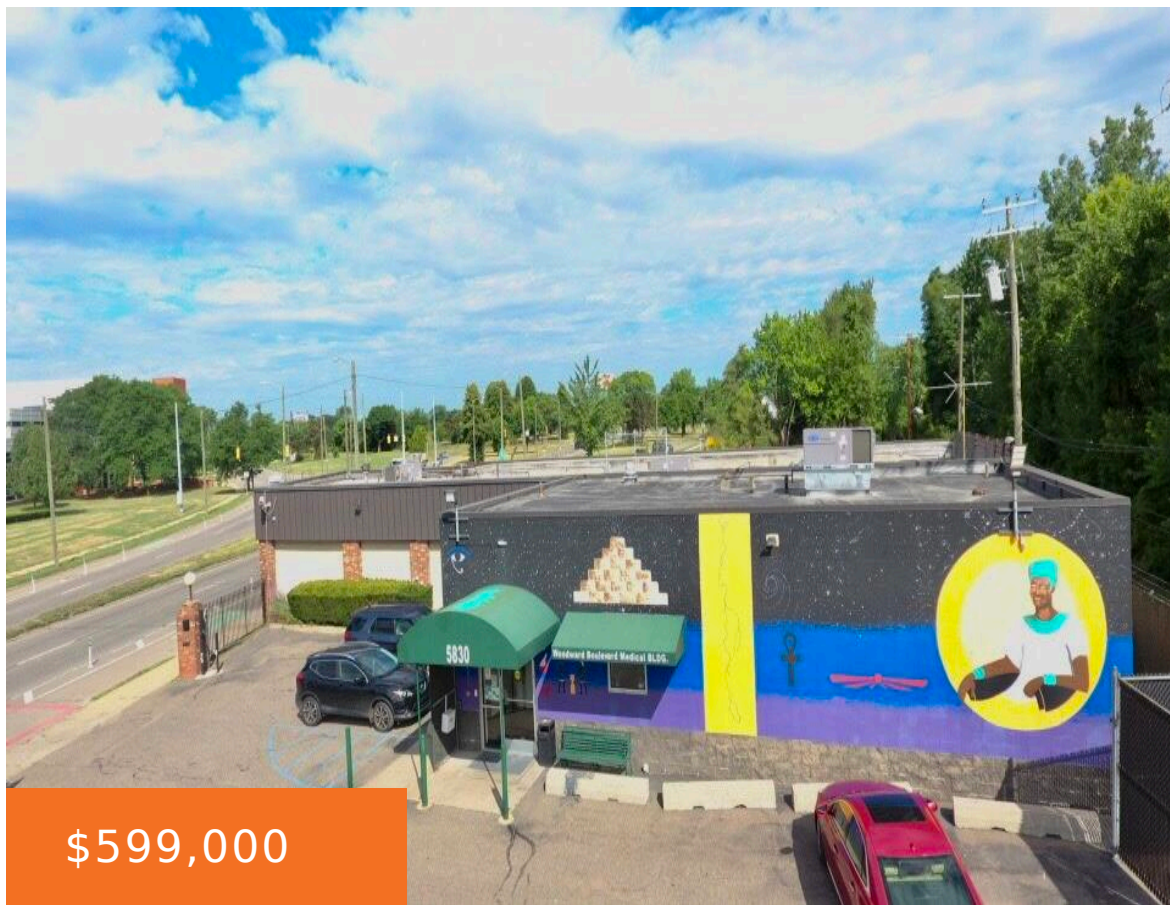


5830, CONNER, DETROIT, MI, 48213

<https://tuckerbenner.com>



Commercial opportunity located near Jefferson North Assembly. This facility features two separate gated parking lots. New A/C units (four) and infinite possibilities for the aspiring entrepreneur.

- 2 baths
- Office
- Commercial Sale
- Active



Basics

Category: Commercial Sale

Status: Active

Lot size: 0.6 sq ft

Bathrooms Full: 2

Business Type: Professional Service

Type: Office

Bathrooms: 2 baths

Year built: 1994

Lot Size Acres: 0.6 acres

County: Wayne



Call us now

Phone: (231)730-8781
 Email: tuckerbennerteam@gmail.com
 Address: 2747 Lakeshore Drive, Twin Lake, MI 49457



Building Details

Building Area Total: 4587 sq ft

Construction Materials: Block

StoriesTotal: 4587

Number Of Units Total: 2

Sewer: Public Sewer

Number Of Buildings: 1

Amenities & Features

Inclusions: 1

Utilities: Public Sewer Available, Natural Gas Available, Electric Available, None Connected

WaterSource: Public **Fireplaces Total:** 1

Fees & Taxes

Tax Assessed Value: \$70,921

Tax Year: 2023

Tax Annual Amount: \$5,650

School Information

High School District: Detroit

Miscellaneous

CrossStreet: Conner/94 East

Listing Terms: Conventional, Cash



Call us now

Phone: (231)730-8781

Email: tuckerbennerteam@gmail.com

Address: 2747 Lakeshore Drive, Twin Lake, MI 49457

