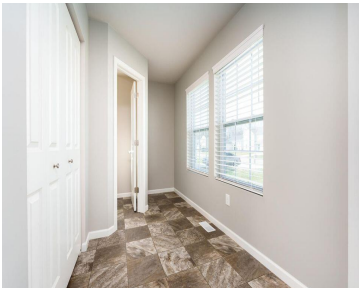
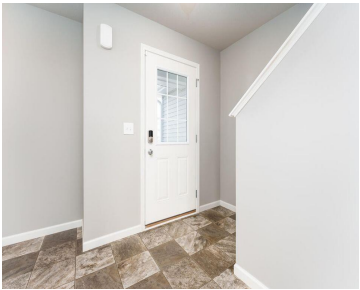


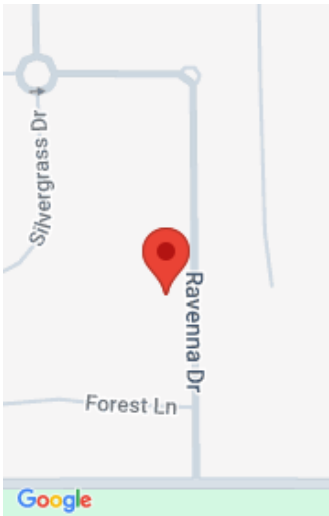
58481, BLUE STEM, MATTAWAN, MI, 49071

https://tuckerbenner.com



This nearly new home, just 7 years old, is situated in the sought-after Silvergrass neighborhood, within the award-winning Mattawan Consolidated Schools district. Upon entering, you'll be impressed by thoughtful upgrades like 2×6 exterior wall construction, an expansive foyer with double closets, and easy access to the powder room. The living room, with new carpeting (2023), [...]

- 4 beds
- 3 baths
- Single Family Residence
- Residential
- Active
- 2075 sq ft



Call us now

Phone: (231)730-8781  
Email: tuckerbennerteam@gmail.com  
Address: 2747 Lakeshore Drive, Twin Lake, MI 49457

# Basics

<b>Category:</b> Residential	<b>Type:</b> Single Family Residence
<b>Status:</b> Active	<b>Bedrooms:</b> 4 beds
<b>Bathrooms:</b> 3 baths	<b>Area:</b> 2075 sq ft
<b>Lot size:</b> 0.19 sq ft	<b>Year built:</b> 2018
<b>Subdivision Name:</b> Silvergrass	<b>Bathrooms Full:</b> 2
<b>Lot Size Acres:</b> 0.19 acres	<b>Rooms Total:</b> 8
<b>County:</b> Van Buren	<b>Bathrooms Half:</b> 1

# Building Details

<b>Building Area Total:</b> 2075 sq ft	<b>Construction Materials:</b> Vinyl Siding
<b>Architectural Style:</b> Traditional	<b>Sewer:</b> Public Sewer
<b>Heating:</b> Forced Air	<b>Stories:</b> 2
<b>Roof:</b> Composition	<b>Basement:</b> Full

# Amenities & Features

<b>Laundry Features:</b> Upper Level	<b>Utilities:</b> Natural Gas Connected
<b>Parking Features:</b> Garage Faces Front, Garage Door Opener, Attached	<b>Garage Spaces:</b> 2
<b>WaterSource:</b> Public	<b>Appliances:</b> Washer, Refrigerator, Range, Microwave, Dryer, Dishwasher
<b>Interior Features:</b> Garage Door Opener, Kitchen Island, Eat-in Kitchen, Pantry	<b>Lot Features:</b> Sidewalk
<b>Window Features:</b> Low-Emissivity Windows, Screens, Insulated Windows	<b>Exterior Features:</b> Fenced Back, Patio
<b>Cooling:</b> SEER 13 or Greater, Central Air	

# Fees & Taxes

Call us now

**Tax Assessed Value:** \$164,300

**Association Fee:** \$90

**Tax Annual Amount:** \$7,229

**Association Fee Frequency:** Quarterly

**Tax Year:** 2024

## School Information

**High School District:** Mattawan

## Miscellaneous

**Road Surface Type:** Paved

**CrossStreet:** Fountain Trail & End

**Listing Terms:** Cash, FHA, VA Loan, Rural Development, MSHDA, Conventional

**Call us now**