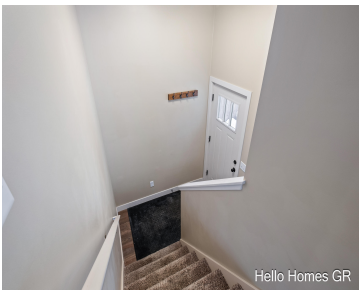
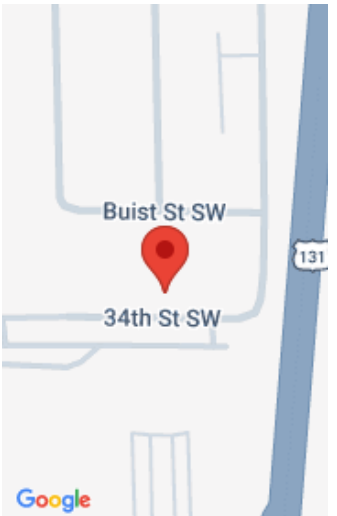


589, 34TH, WYOMING, MI, 49509  
https://tuckerbenner.com



Say "Hello!" to this centrally located 4 bedroom, 2 bath bi-level in Wyoming, offering quick access to major roads and highways for an easy commute. A charming front porch welcomes you into the entryway and leads to the bright upper level, featuring a spacious living and dining area filled with natural light from large windows. [...]

- 4 beds
- 2 baths
- Single Family Residence
- Residential
- Active
- 1570 sq ft



# Basics

<b>Category:</b> Residential	<b>Type:</b> Single Family Residence
<b>Status:</b> Active	<b>Bedrooms:</b> 4 beds
<b>Bathrooms:</b> 2 baths	<b>Area:</b> 1570 sq ft
<b>Lot size:</b> 0.13 sq ft	<b>Year built:</b> 2017
<b>Bathrooms Full:</b> 2	<b>Lot Size Acres:</b> 0.13 acres
<b>Rooms Total:</b> 7	<b>County:</b> Kent

# Building Details

<b>Building Area Total:</b> 820 sq ft	<b>Construction Materials:</b> Vinyl Siding
<b>Sewer:</b> Public	<b>Heating:</b> Forced Air
<b>Stories:</b> 2	<b>Roof:</b> Composition
<b>Levels:</b> Bi-Level	<b>Basement:</b> Daylight

# Amenities & Features

<b>Laundry Features:</b> Lower Level	<b>Flooring:</b> Carpet, Vinyl
<b>Utilities:</b> Phone Available, Natural Gas Available, Electricity Available, Cable Available, Natural Gas Connected, Storm Sewer	<b>Fencing:</b> Fenced Back
<b>Parking Features:</b> Garage Faces Front, Attached	<b>Garage Spaces:</b> 1
<b>WaterSource:</b> Public	<b>Appliances:</b> Dishwasher, Disposal, Dryer, Microwave, Range, Refrigerator, Washer
<b>Interior Features:</b> Broadband, Garage Door Opener	<b>Lot Features:</b> Level, Sidewalk
<b>Window Features:</b> Low-Emissivity Windows, Window Treatments	<b>Patio And Porch Features:</b> Porch(es)
<b>Cooling:</b> Central Air	

## Call us now



## Fees & Taxes

**Tax Assessed Value:** \$103,729  
**Tax Annual Amount:** \$4,159.30

**Tax Year:** 2025



## School Information

**High School District:** Godwin Heights



## Miscellaneous

**Road Surface Type:** Paved  
**Listing Terms:** Cash, FHA, VA Loan, Conventional

**CrossStreet:** Charlesgate SW

**Call us now**



Phone: (231)730-8781  
Email: tuckerbennerteam@gmail.com  
Address: 2747 Lakeshore Drive, Twin Lake, MI 49457

