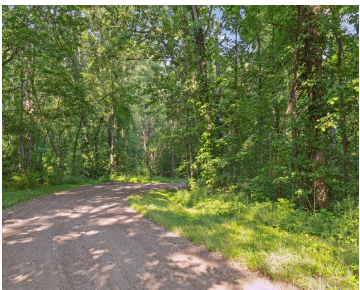
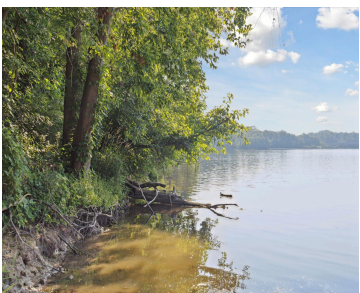
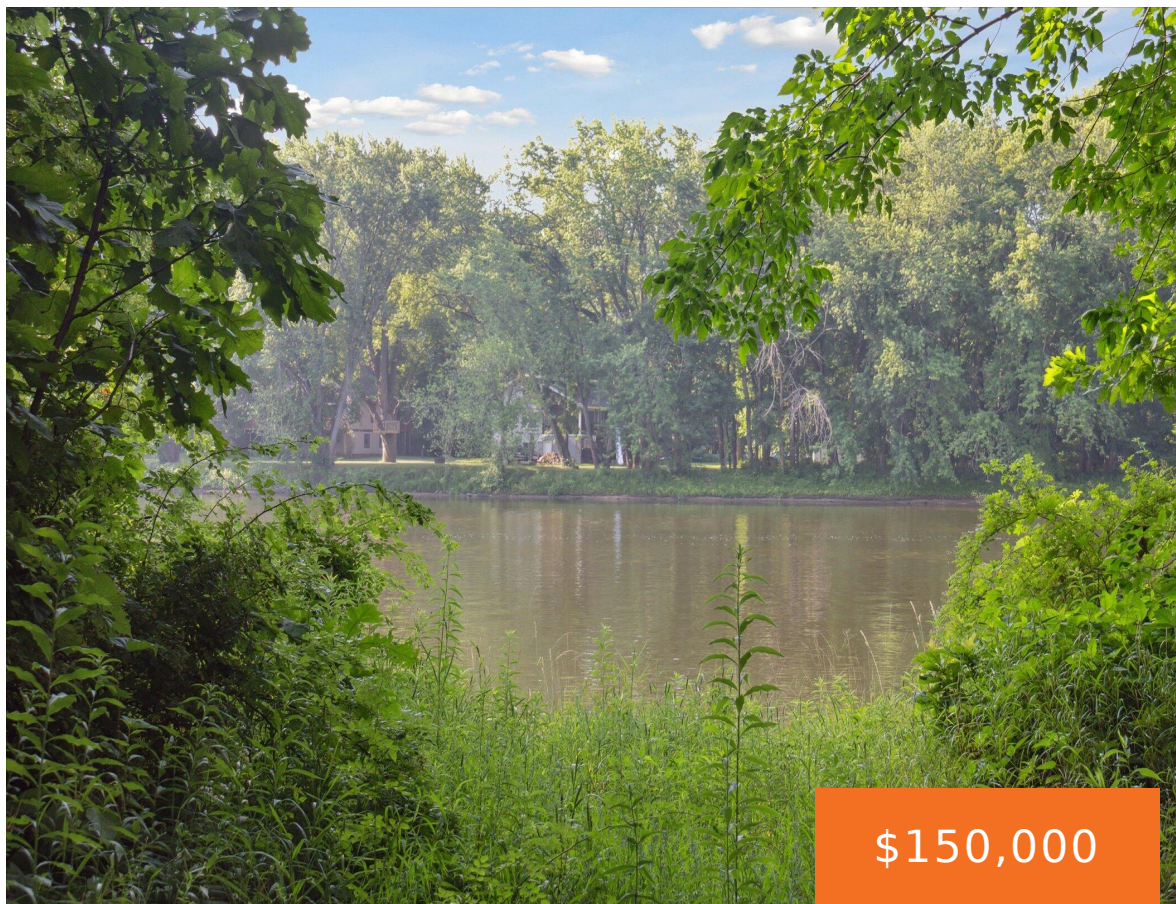


5904, WEST RIVER, BELMONT, MI, 49306

https://tuckerbenner.com



Discover the perfect canvas for your dream home on this stunning 2.5-acre parcel with Grand River frontage located in the highly sought-after Rockford School District! With a mix of open space and natural beauty, this vacant land offers endless possibilities—whether you’re envisioning a private retreat, or are planning a custom new build. Enjoy peaceful views, [...]

- 0 baths
- Acreage
- Land
- Active



Basics

Category: Land

Status: Active

Lot size: 2.5 sq ft

County: Kent

Type: Acreage

Bathrooms: 0 baths

Lot Size Acres: 2.5 acres

Amenities & Features

Utilities: Natural Gas Available, Electricity Available, Cable Available, Phone Available, None

WaterSource: Public

Waterfront Features: River

Lot Features: Buildable, Wooded, Corner Lot

Fees & Taxes

Tax Assessed Value: \$4,545

Tax Annual Amount: \$1,752.25

Tax Year: 2024

School Information

High School District: Rockford

Miscellaneous

Road Surface Type: Paved

CrossStreet: Lawrence and West River Drive

Listing Terms: Cash, Conventional

Call us now